



City of Cambridge

138.

IN CITY COUNCIL
July 27, 1998

COUNCILLOR RUSSELL
COUNCILLOR BORN
COUNCILLOR DAVIS
MAYOR DUEHAY
VICE MAYOR GALLUCCIO
COUNCILLOR REEVES
COUNCILLOR SULLIVAN
COUNCILLOR TRIANTAFILLOU

RESOLVED: That the attached information regarding parking garages be forwarded to the City Manager and his staff for their information and perusal.

In City Council July 27, 1998.

Adopted by the affirmative vote of nine members.

Attest:- D. Margaret Drury, City Clerk.

A true copy;

A handwritten signature in cursive script that reads "D. Margaret Drury".

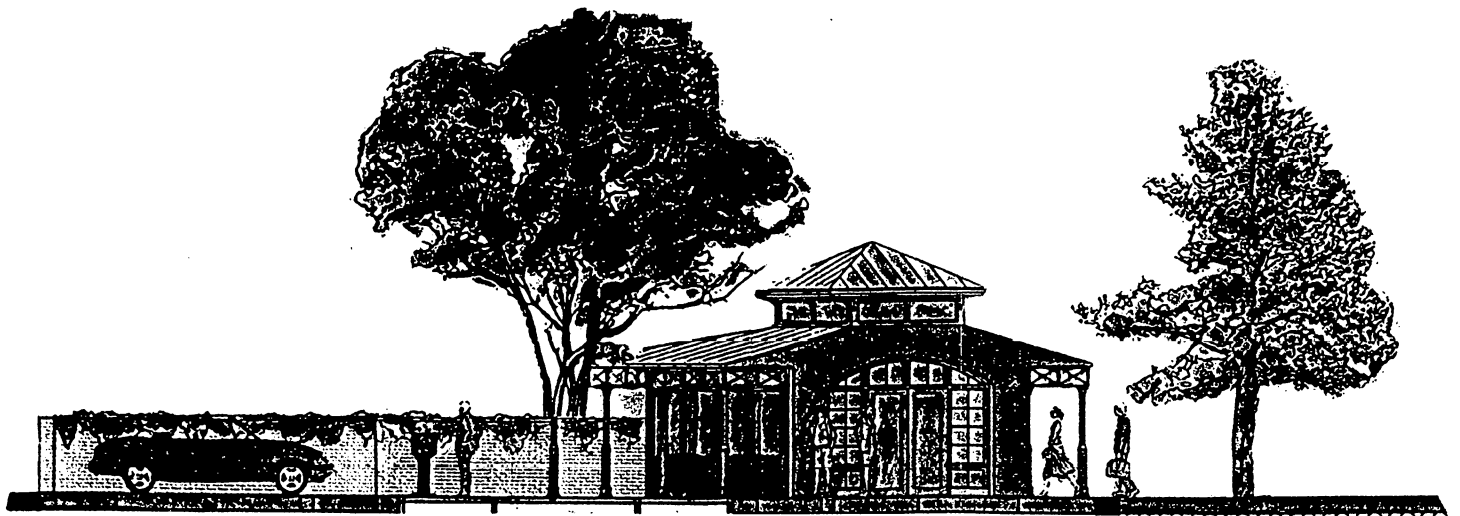
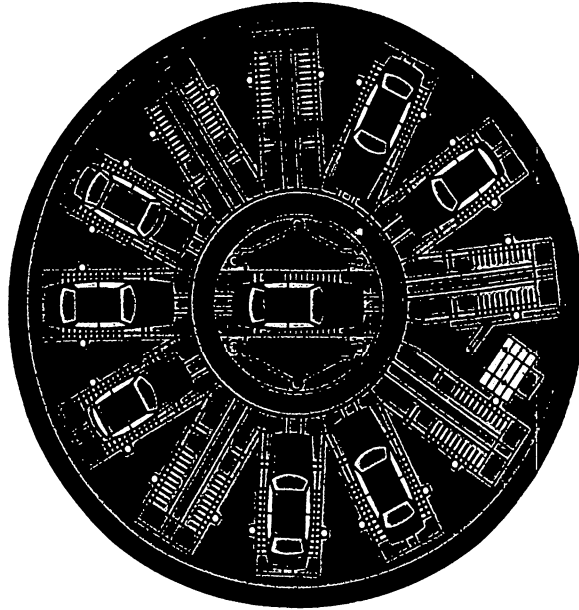
ATTEST:-

D. Margaret Drury
City Clerk

138

TREVI PARK

Automatic Parking System



"Cars should serve us, not consume the valuable land of our cities..."

#138

TREVIPARK solves one of the greatest land-use problems facing urban areas today, providing cost-effective parking that conserves valuable land and protects the natural and built visual environment.

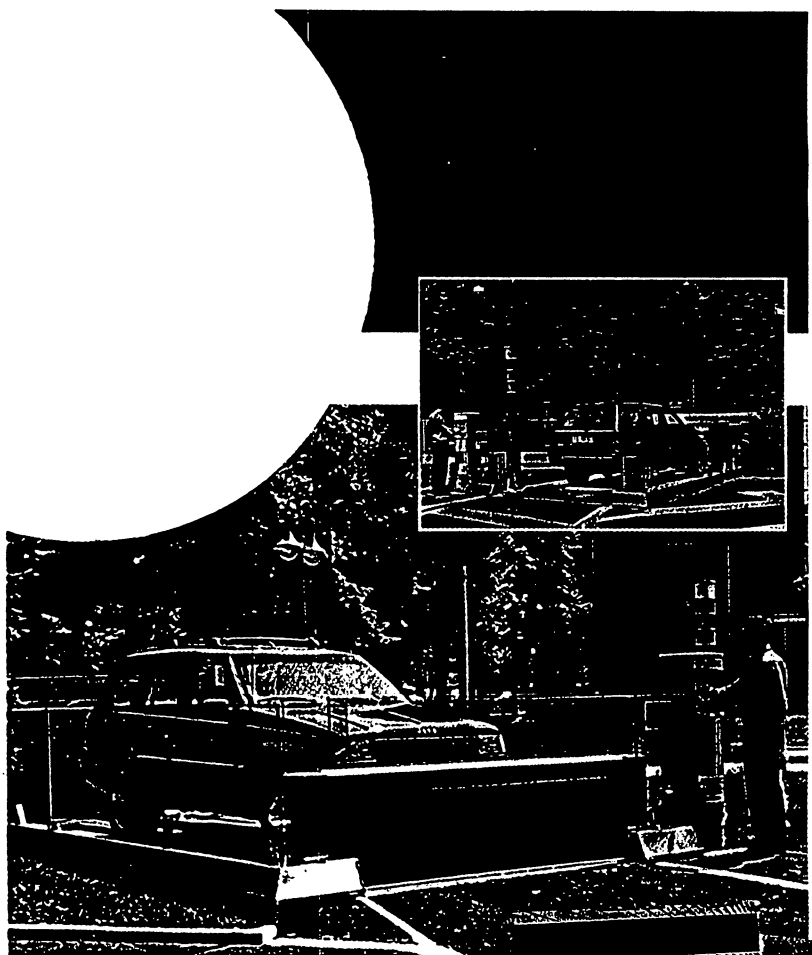
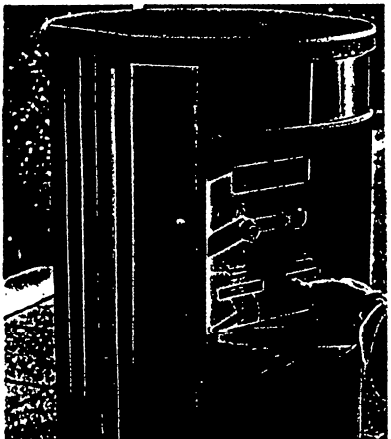
How does TREVIPARK work?

TREVIPARK is an underground, multi-story stacking system that holds cars efficiently, thus reducing the cost of each parking space. Parking takes place automatically, without the driver on board. The patron simply drives into a parking lane that serves as the loading pick-up point, turns the car off and leaves.

The car is then conveyed into the cylindrical structure by an elevator that automatically transfers the car to a safe dock. The driver receives a magnetic card to retrieve the

vehicle and to pay for its storage. Parking and retrieval take just moments.

The surface kiosk provides a sheltered and secure waiting area during retrieval. Access to the kiosk is limited to patrons using the TreviPark magnetic card. The kiosk can be equipped with video screens providing traffic and news updates, ATMs and information services.

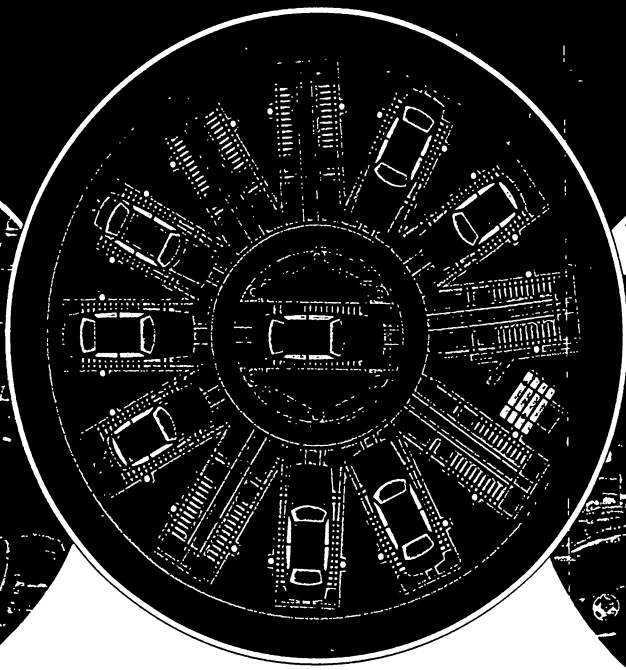


Total cycle time for retrieval takes between fifteen seconds and one minute, based on vehicle location within the circular garage.

TREVIPARK Preserves Open Space and Enhances the Built Environment, while Minimizing the Impact on the Natural Environment.



BEFORE



AFTER



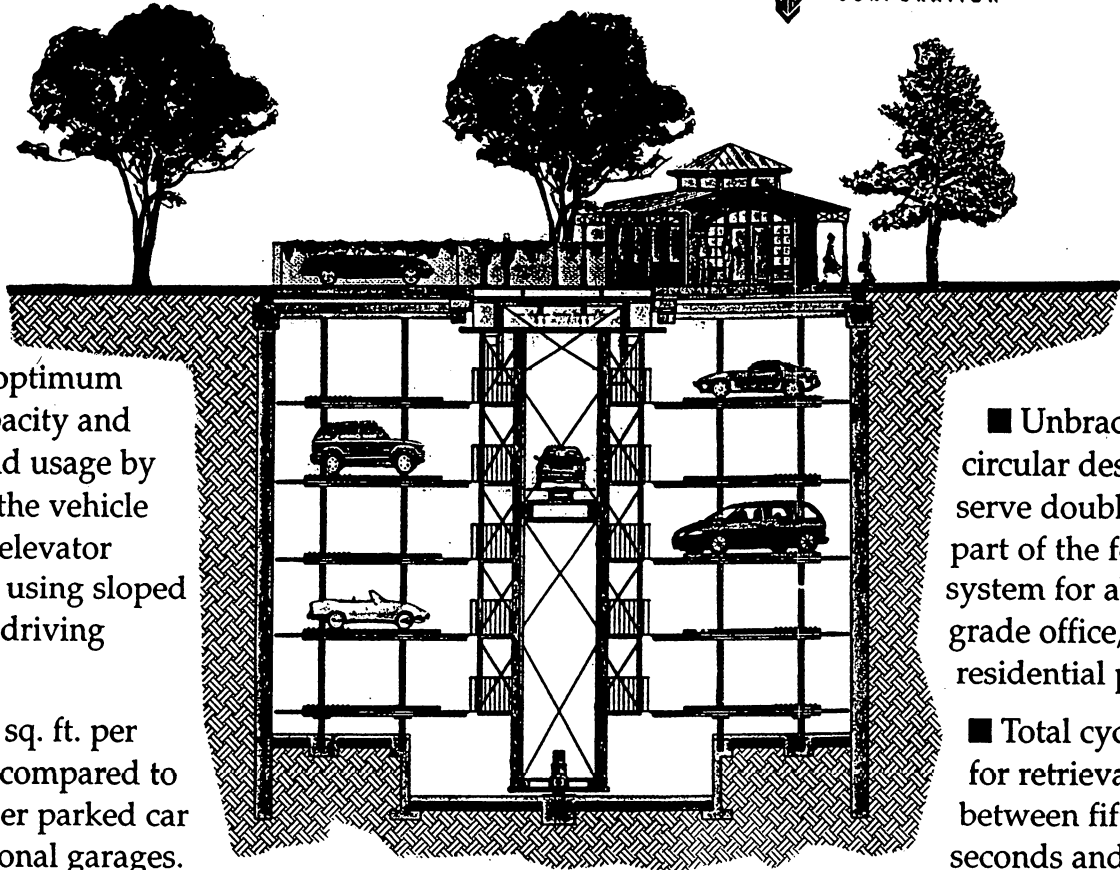
- No ramps or open cuts to degrade the visual environment.
- Up to 108 cars can be parked with a visual impact of only 2 surface spaces and a kiosk.
- Surface kiosk is designed to enhance surrounding architecture and open space.
- Retail or other public services can be incorporated into the design of the kiosk.
- Dramatically reduces paved areas compared to traditionally constructed parking structures.

The TREVIPARK underground system preserves historical centers, green spaces, courtyards, urban streets and boulevards.

#138

Key benefits of the **TREVIPARK** Underground Parking System:

As built by
TREVICOS
CORPORATION



■ Permits optimum storage capacity and reduces land usage by conveying the vehicle by vertical elevator rather than using sloped ramps and driving lanes.

■ Uses 220 sq. ft. per parked car compared to 400 sq. ft. per parked car in conventional garages.

The system accommodates all sizes of cars, light trucks and sport utility vehicles. A special system can be designed to accommodate buses and trucks.

Minimizes environmental impact because 80% of the surface circumference can be landscaped.

Can be built in tight areas, near existing buildings and beneath or within new construction.

Patron activity is above ground, minimizing the garage's heating, air circulation and lighting needs.

■ Unbraced circular design can serve double duty as part of the foundation system for above-grade office, hotel and residential projects.

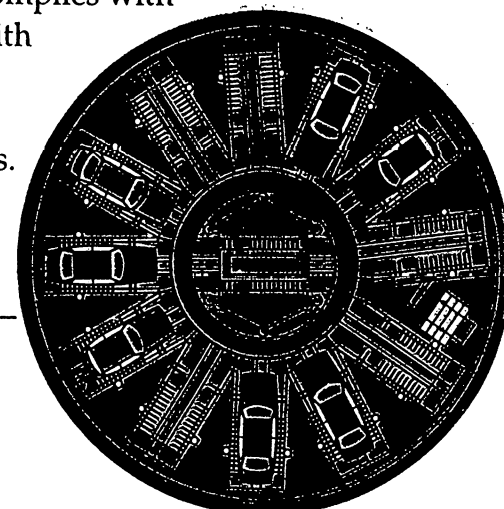
■ Total cycle time for retrieval takes between fifteen seconds and one minute, based on location

within the circular garage.

■ Mechanized "valet" service allows for easy storage and retrieval.

■ Precludes scratches and dents because vehicles are isolated from each other.

■ Accessibility complies with the Americans with Disabilities Act without added construction costs.

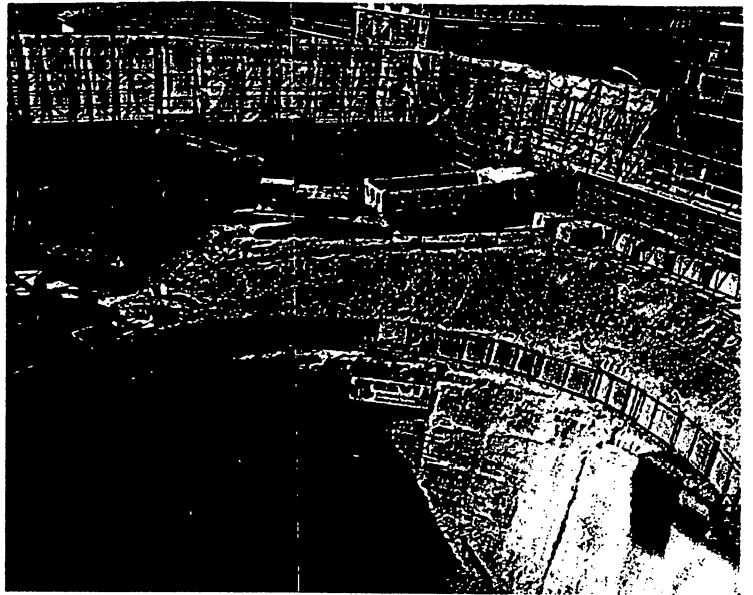
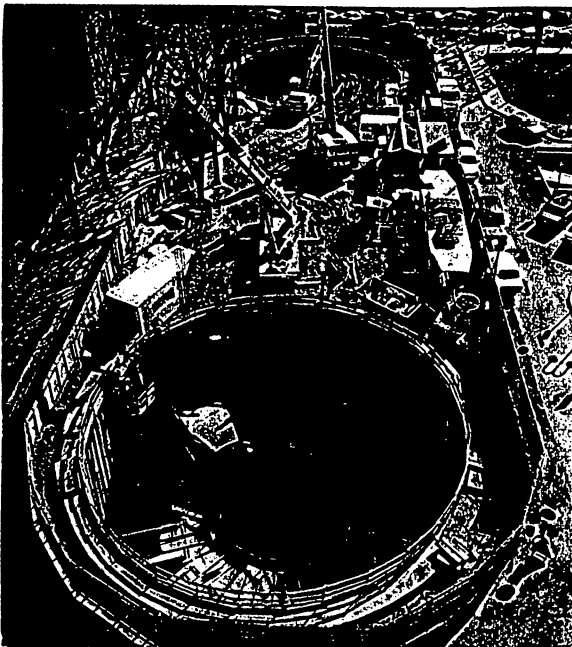


TREVIPARK fits into a 72'-diameter circle and holds 12 cars per floor, accommodating between 72 and 108 cars, with a surface impact of only two parking spaces and one kiosk.

TREVIPARK's Circular Design offers Maximum Cost Efficiency and Ease of Construction.

- Costs half the price of a conventional urban garage to construct and takes up half the volume and 80% of the depth.

- Since the vehicle is not running when being stored, TreviPark uses one third of the energy required to ventilate a conventional garage.

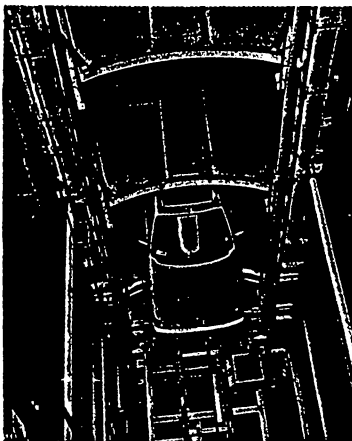


Garage incorporated as foundation of an apartment building

- Circular design offers the engineering efficiencies of unbraced construction, with associated shorter construction time and lower costs than rectangular structures.

- In tight locations, construction activity can take place within the confines of the garage circle.

TREVIPARK Reduces Operation and Maintenance Cost.



- Redundant back-up systems for major components are built-in to avoid down time for repair or maintenance.

- 24-hour central control station provides security and assures uninterrupted operations.

- No staffing necessary on site.

- Mechanical parts are easily replaceable and locally available.

- Parked vehicles are protected from weather and vandalism.

TREVIPARK can serve as part of the foundation system for above-grade office, hotel and residential projects.

#138

“Cars should serve us, not consume the valuable land of our cities and degrade urban architecture and public spaces. Where many see the need for larger parking areas, we see the desire for larger parks. Our vision in designing TreviPark is to meet practical needs while fulfilling our desire and civic responsibility to protect and restore our urban environment.”

Mr. Davide Trevisani
Chairman - Trevi Group

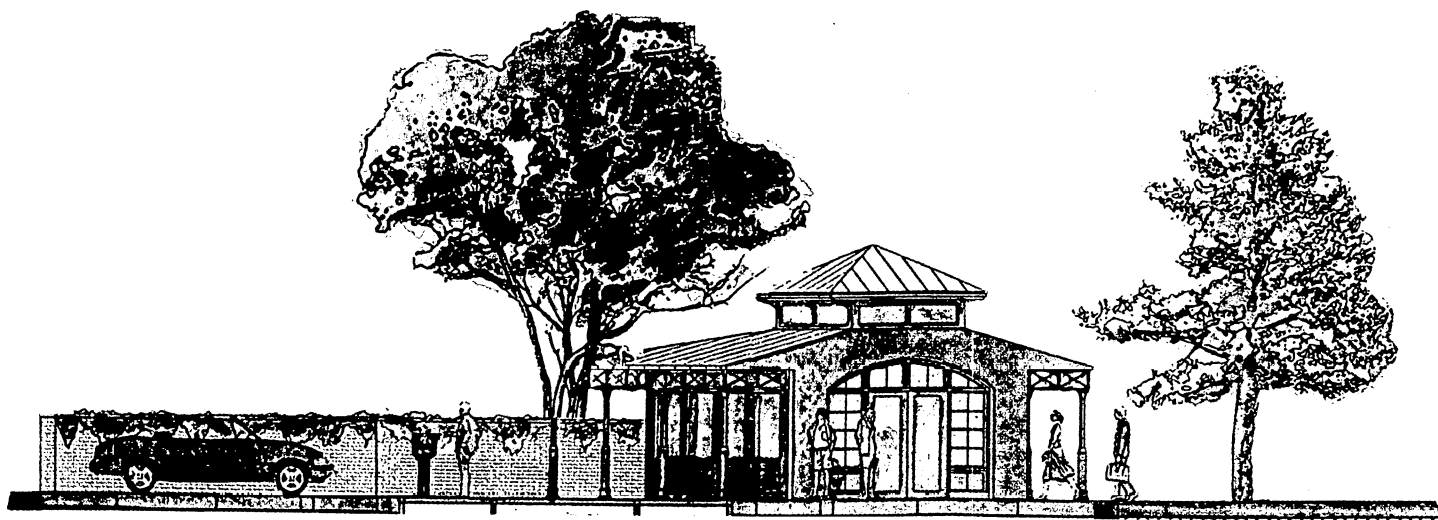
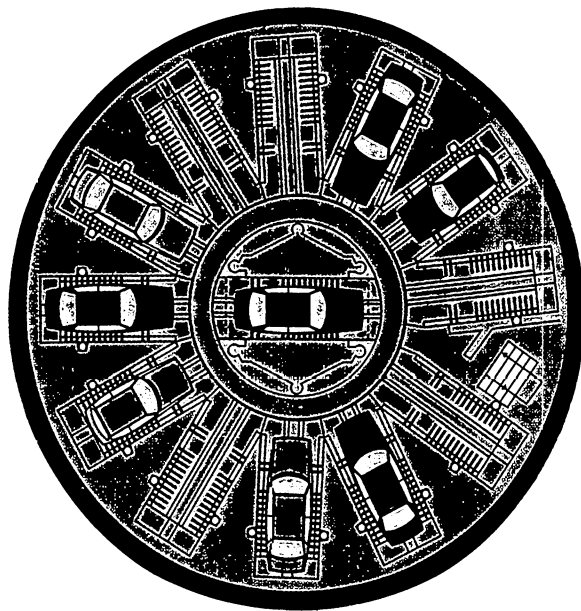
TREVIIPARK

Automatic Parking System

TREVIIPARK

TREVIPARK

Automatic Parking System



"Cars should serve us, not consume the valuable land of our cities..."

TREVIPARK

 solves one of the greatest land-use problems facing urban areas today, providing cost-effective parking that conserves valuable land and protects the natural and built visual environment.

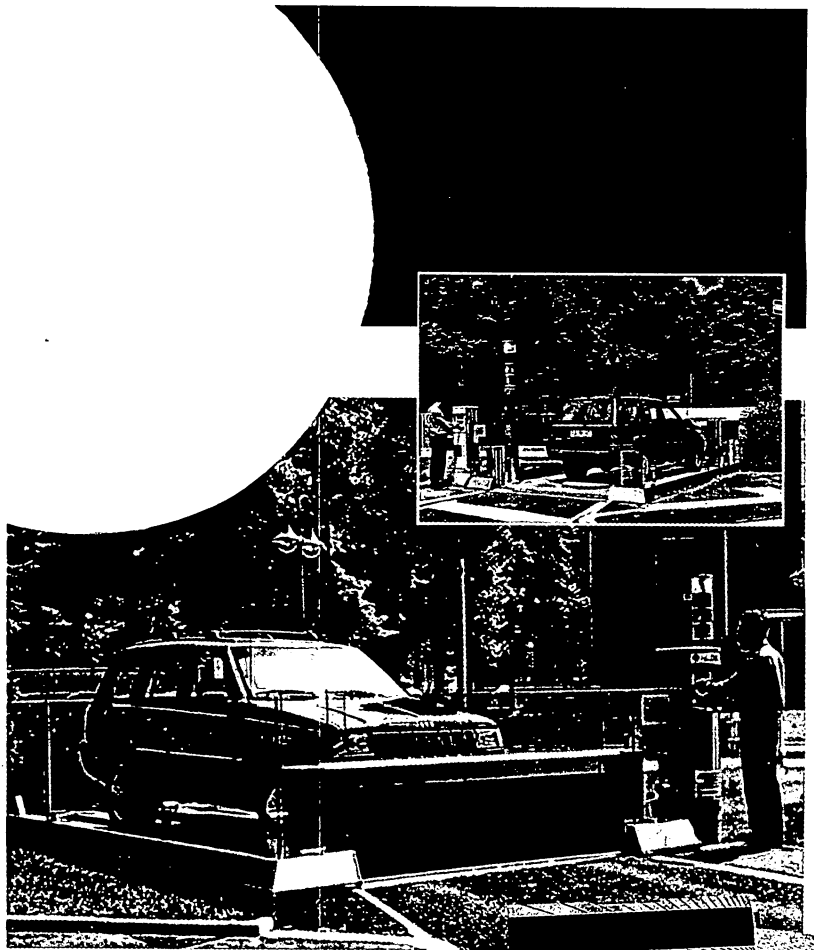
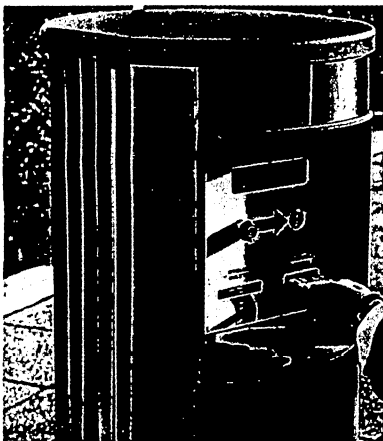
How does TREVIPARK work?

TREVIPARK is an underground, multi-story stacking system that holds cars efficiently, thus reducing the cost of each parking space. Parking takes place automatically, without the driver on board. The patron simply drives into a parking lane that serves as the loading pick-up point, turns the car off and leaves.

The car is then conveyed into the cylindrical structure by an elevator that automatically transfers the car to a safe dock. The driver receives a magnetic card to retrieve the

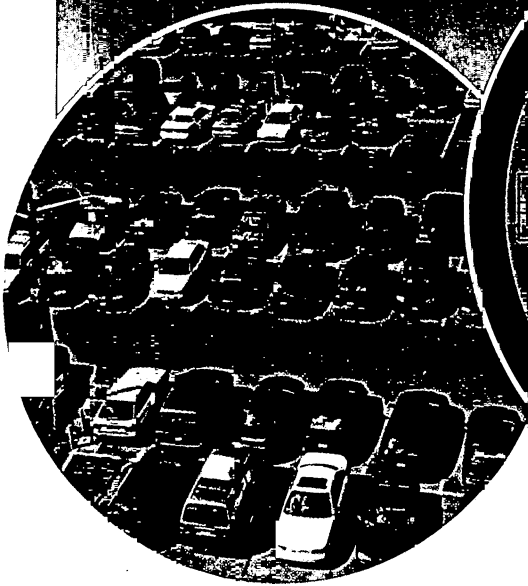
vehicle and to pay for its storage. Parking and retrieval take just moments.

The surface kiosk provides a sheltered and secure waiting area during retrieval. Access to the kiosk is limited to patrons using the TreviPark magnetic card. The kiosk can be equipped with video screens providing traffic and news updates, ATMs and information services.

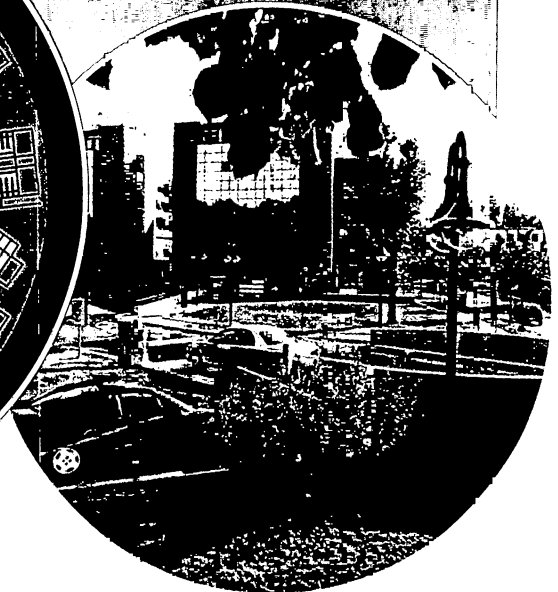
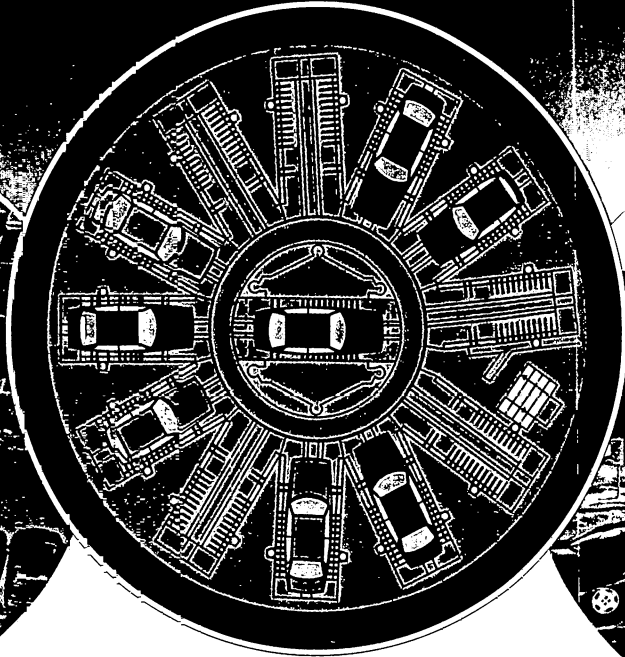


Total cycle time for retrieval takes between fifteen seconds and one minute, based on vehicle location within the circular garage.

TREVIPARK Preserves Open Space and Enhances the Built Environment, while Minimizing the Impact on the Natural Environment.



BEFORE



AFTER

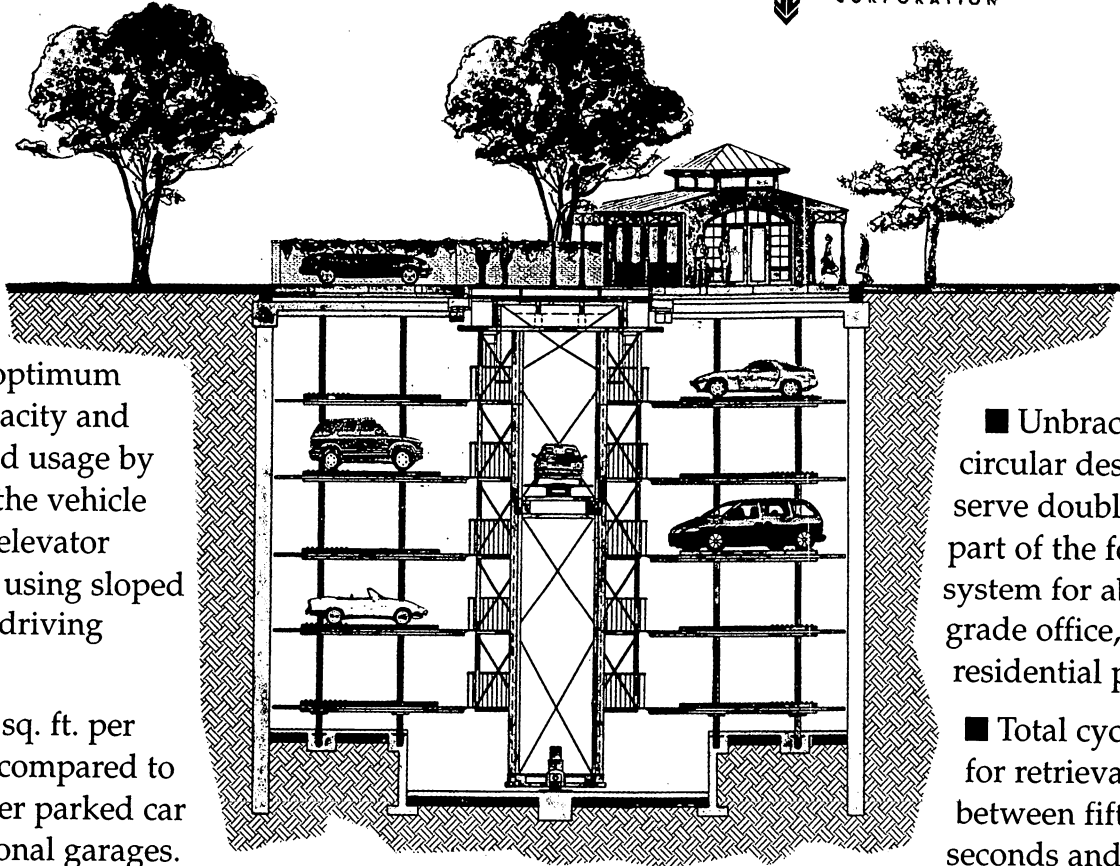


- No ramps or open cuts to degrade the visual environment.
- Up to 108 cars can be parked with a visual impact of only 2 surface spaces and a kiosk.
- Surface kiosk is designed to enhance surrounding architecture and open space.
- Retail or other public services can be incorporated into the design of the kiosk.
- Dramatically reduces paved areas compared to traditionally constructed parking structures.

The TREVIPARK underground system preserves historical centers, green spaces, courtyards, urban streets and boulevards.

Key benefits of the
TREVIPARK
 Underground Parking System:

As built by
TREVIICOS
 CORPORATION



Permits optimum storage capacity and reduces land usage by conveying the vehicle by vertical elevator rather than using sloped ramps and driving lanes.

Uses 220 sq. ft. per parked car compared to 400 sq. ft. per parked car in conventional garages.

The system accommodates all sizes of cars, light trucks and sport utility vehicles. A special system can be designed to accommodate buses and trucks.

Minimizes environmental impact because 80% of the surface circumference can be landscaped.

Can be built in tight areas, near existing buildings and beneath or within new construction.

Patron activity is above ground, minimizing the garage's heating, air circulation and lighting needs.

■ Unbraced circular design can serve double duty as part of the foundation system for above-grade office, hotel and residential projects.

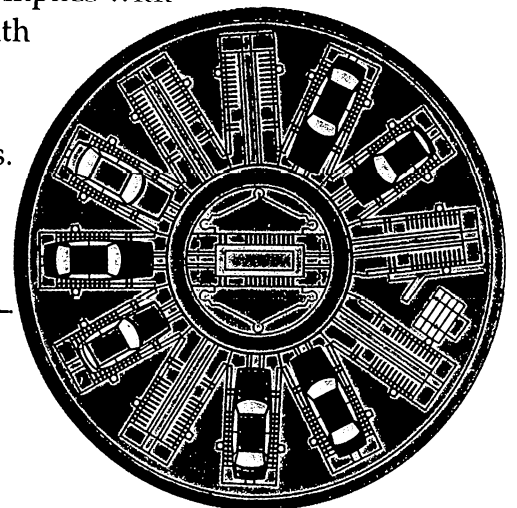
■ Total cycle time for retrieval takes between fifteen seconds and one minute, based on location within the circular garage.

■ Mechanized "valet" service allows for easy storage and retrieval.

■ Precludes scratches and dents because vehicles are isolated from each other.

■ Accessibility complies with the Americans with Disabilities Act without added construction costs.

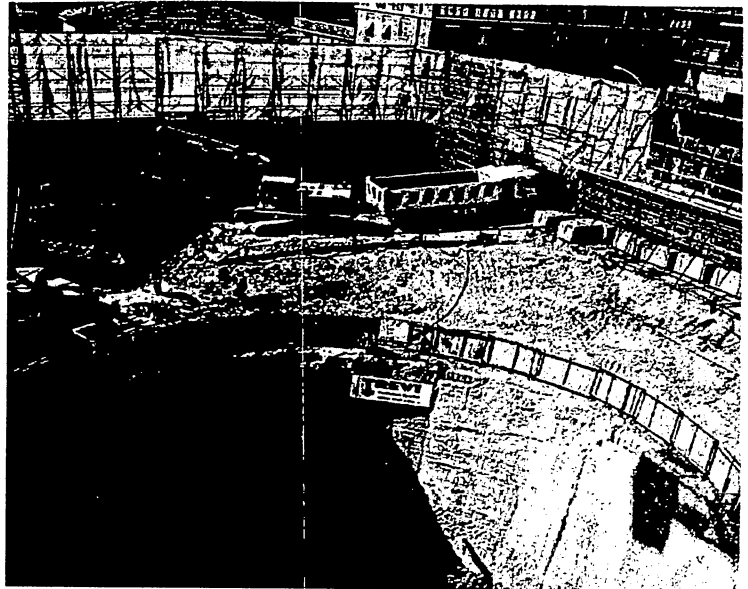
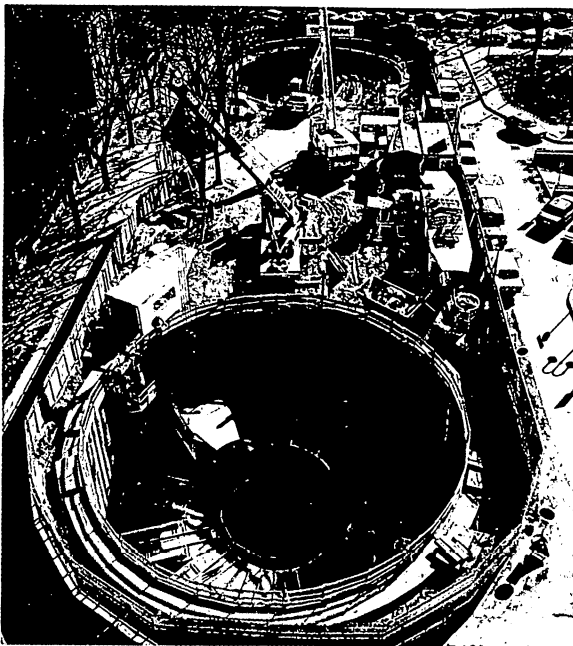
TREVIPARK fits into a 72'-diameter circle and holds 12 cars per floor, accommodating between 72 and 108 cars, with a surface impact of only two parking spaces and one kiosk.



TREVIPARK's Circular Design offers Maximum Cost Efficiency and Ease of Construction.

■ Costs half the price of a conventional urban garage to construct and takes up half the volume and 80% of the depth.

■ Since the vehicle is not running when being stored, TreviPark uses one third of the energy required to ventilate a conventional garage.

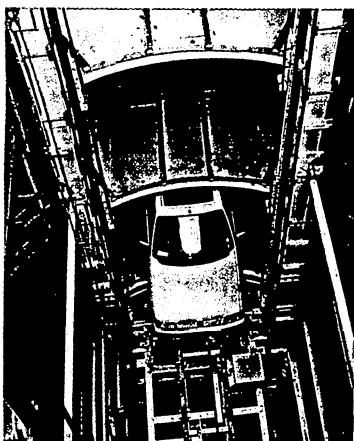


Garage incorporated as foundation of an apartment building

■ Circular design offers the engineering efficiencies of unbraced construction, with associated shorter construction time and lower costs than rectangular structures.

■ In tight locations, construction activity can take place within the confines of the garage circle.

TREVIPARK Reduces Operation and Maintenance Cost.



■ Redundant back-up systems for major components are built-in to avoid down time for repair or maintenance.

■ 24-hour central control station provides security and assures uninterrupted operations.

■ No staffing necessary on site.

■ Mechanical parts are easily replaceable and locally available.

■ Parked vehicles are protected from weather and vandalism.

TREVIPARK can serve as part of the foundation system for above-grade office, hotel and residential projects.

“Cars should serve us, not consume the valuable land of our cities and degrade urban architecture and public spaces. Where many see the need for larger parking areas, we see the desire for larger parks. Our vision in designing TreviPark is to meet practical needs while fulfilling our desire and civic responsibility to protect and restore our urban environment.”

Mr. Davide Trevisani
Chairman - Trevi Group

TREVI PARK
Automatic Parking System

TREVI PARK

TREVIPARK solves one of the greatest land-use problems facing urban areas today, providing cost-effective parking that conserves valuable land and protects the natural and built visual environment.

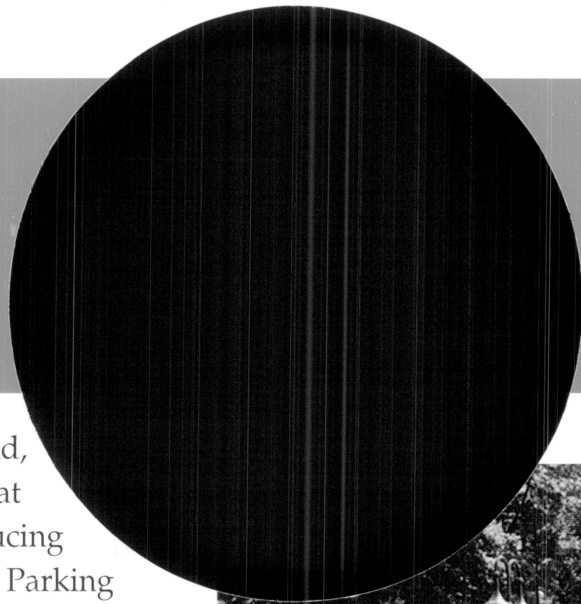
How does TREVIPARK work?

TREVIPARK is an underground, multi-story stacking system that holds cars efficiently, thus reducing the cost of each parking space. Parking takes place automatically, without the driver on board. The patron simply drives into a parking lane that serves as the loading pick-up point, turns the car off and leaves.

The car is then conveyed into the cylindrical structure by an elevator that automatically transfers the car to a safe dock. The driver receives a magnetic card to retrieve the

vehicle and to pay for its storage. Parking and retrieval take just moments.

The surface kiosk provides a sheltered and secure waiting area during retrieval. Access to the kiosk is limited to patrons using the TreviPark magnetic card. The kiosk can be equipped with video screens providing traffic and news updates, ATMs and information services.

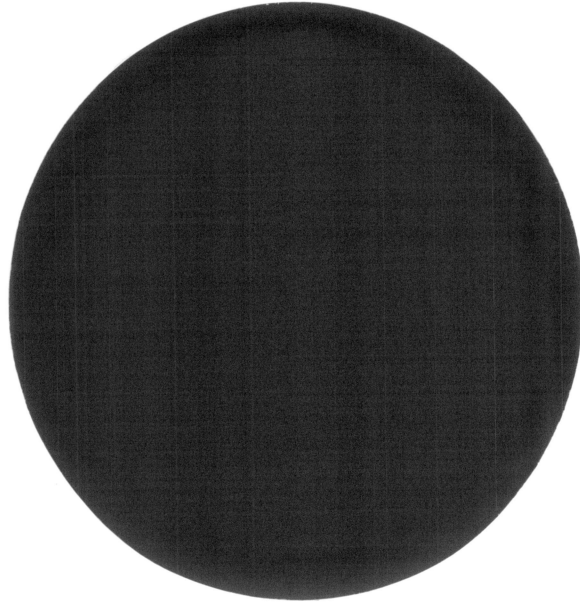


Total cycle time for retrieval takes between fifteen seconds and one minute, based on vehicle location within the circular garage.

TREVI PARK

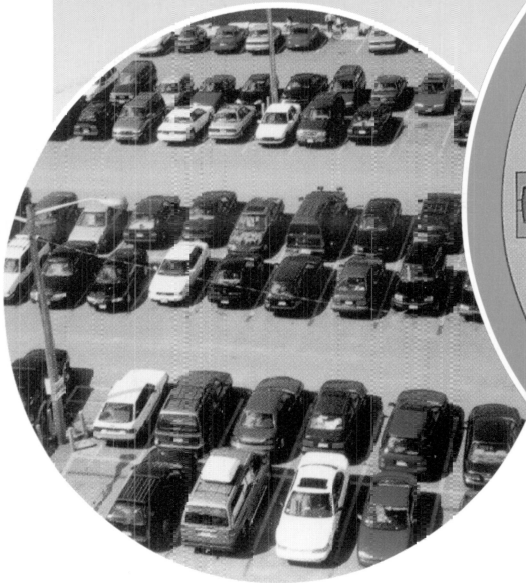
138

Automatic Parking System

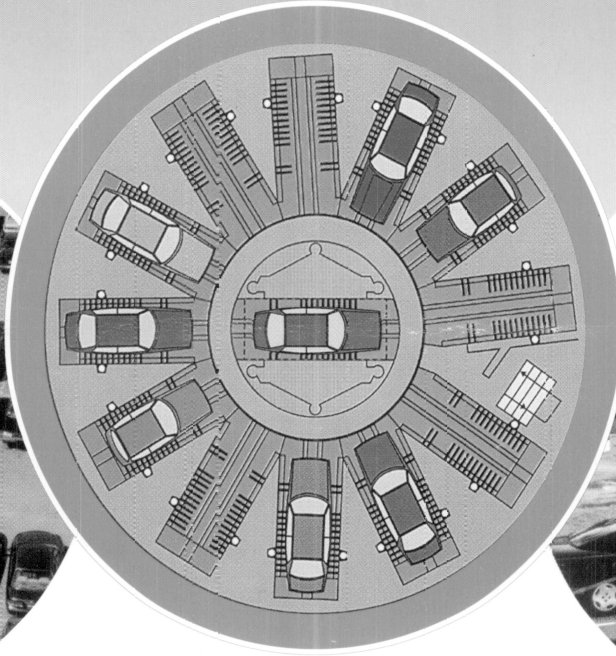


"Cars should serve us, not consume the valuable land of our cities..."

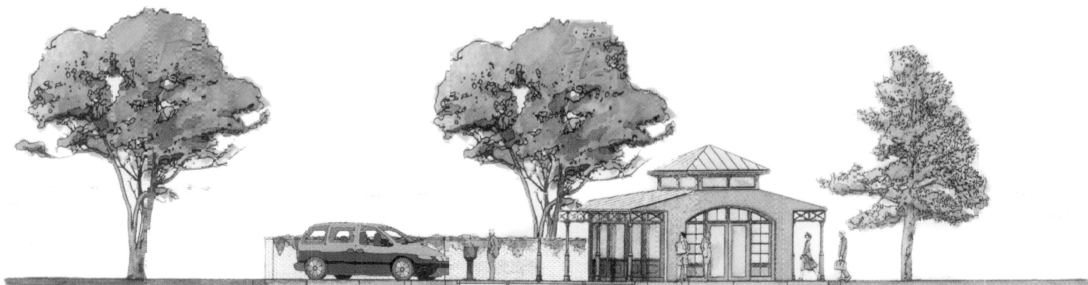
TREVIPARK Preserves Open Space and Enhances the Built Environment, while Minimizing the Impact on the Natural Environment.



BEFORE



AFTER

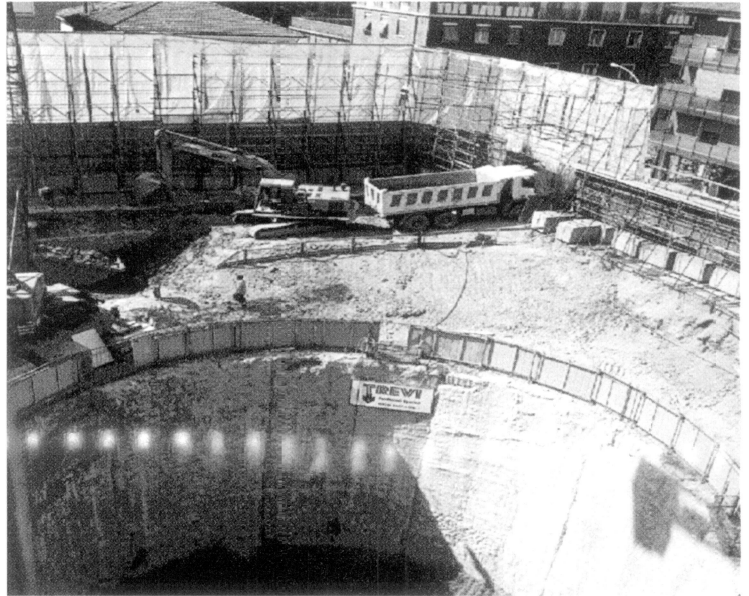


- No ramps or open cuts to degrade the visual environment.
- Up to 108 cars can be parked with a visual impact of only 2 surface spaces and a kiosk.
- Surface kiosk is designed to enhance surrounding architecture and open space.
- Retail or other public services can be incorporated into the design of the kiosk.
- Dramatically reduces paved areas compared to traditionally constructed parking structures.

The TREVIPARK underground system preserves historical centers, green spaces, courtyards, urban streets and boulevards.

TREVIPARK's Circular Design offers Maximum Cost Efficiency and Ease of Construction.

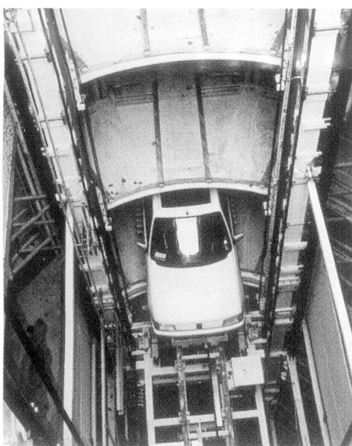
- Costs half the price of a conventional urban garage to construct and takes up half the volume and 80% of the depth.
- Since the vehicle is not running when being stored, TreviPark uses one third of the energy required to ventilate a conventional garage.



Garage incorporated as foundation of an apartment building

- Circular design offers the engineering efficiencies of unbraced construction, with associated shorter construction time and lower costs than rectangular structures.
- In tight locations, construction activity can take place within the confines of the garage circle.

TREVIPARK Reduces Operation and Maintenance Cost.



- Redundant back-up systems for major components are built-in to avoid down time for repair or maintenance.
- 24-hour central control station provides security and assures uninterrupted operations.
- No staffing necessary on site.
- Mechanical parts are easily replaceable and locally available.
- Parked vehicles are protected from weather and vandalism.

TREVIPARK can serve as part of the foundation system for above-grade office, hotel and residential projects.

“Cars should serve us, not consume the valuable land of our cities and degrade urban architecture and public spaces. Where many see the need for larger parking areas, we see the desire for larger parks. Our vision in designing TreviPark is to meet practical needs while fulfilling our desire and civic responsibility to protect and restore our urban environment.”

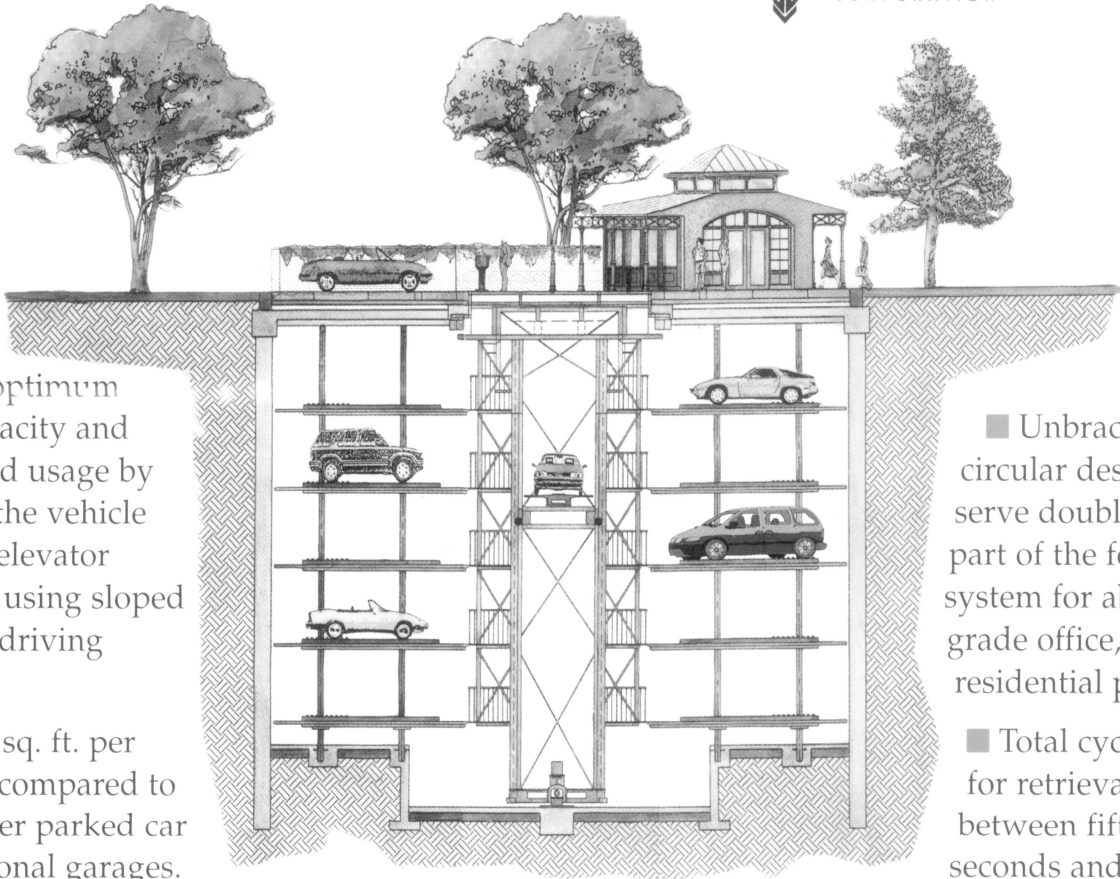
Mr. Davide Trevisani
Chairman - Trevi Group

TREVIPARK
Automatic Parking System

TREVIPARK

Key benefits of the
TREVIPARK
 Underground Parking System:

As built by
TREVIICOS
 CORPORATION



■ Permits optimum storage capacity and reduces land usage by conveying the vehicle by vertical elevator rather than using sloped ramps and driving lanes.

■ Uses 220 sq. ft. per parked car compared to 400 sq. ft. per parked car in conventional garages.

■ The system accommodates all sizes of cars, light trucks and sport utility vehicles. A special system can be designed to accommodate buses and trucks.

■ Minimizes environmental impact because 80% of the surface circumference can be landscaped.

■ Can be built in tight areas, near existing buildings and beneath or within new construction.

■ Patron activity is above ground, minimizing the garage's heating, air circulation and lighting needs.

■ Unbraced circular design can serve double duty as part of the foundation system for above-grade office, hotel and residential projects.

■ Total cycle time for retrieval takes between fifteen seconds and one minute, based on location

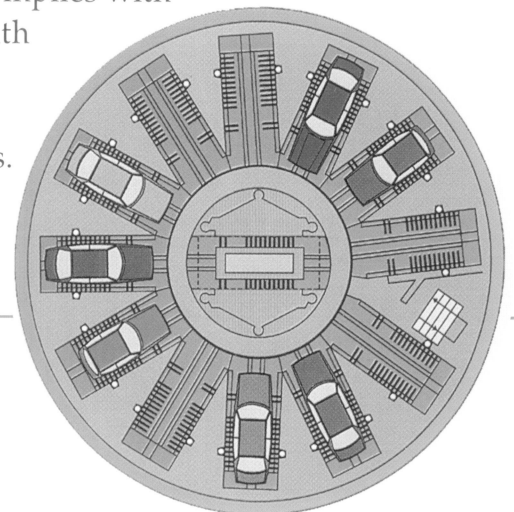
within the circular garage.

■ Mechanized "valet" service allows for easy storage and retrieval.

■ Precludes scratches and dents because vehicles are isolated from each other.

■ Accessibility complies with the Americans with Disabilities Act without added construction costs.

TREVIPARK fits into a 72'-diameter circle and holds 12 cars per floor, accommodating between 72 and 108 cars, with a surface impact of only two parking spaces and one kiosk.



✓
Councillor Russell

(138)

Resolved: That the attached information regarding parking garages be forwarded to the City Manager and his staff for their information and perusal.



City of Cambridge

138.

IN CITY COUNCIL
July 27, 1998

COUNCILLOR RUSSELL

RESOLVED: That the attached information regarding parking garages be forwarded to the City Manager and his staff for their information and perusal.

Consent Order #138 *382CM*

Councillor Russell re: information
regarding parking garages.

In City Council July 27, 1998

ORDER ADOPTED