

1988 JAN 25 AM 9:51

January 21  
~~December 11~~, 1988

CAMBRIDGE, MA

To the Honorable, the City Council:

The proposal for a seven story apartment building at 239-253 River Street will have a devastating impact on our neighborhood, if built as planned. The overwhelming height, where no other building exceeds three stories, is unacceptable. Traffic and parking problems generated by 36 three and four bedroom apartments and 2500 square feet of commercial space supported by only 40 parking spaces add to our concerns.

We welcome the inclusion of 18 subsidized units through MHFA's SHARP program. Our neighborhood has a high proportion of subsidized housing already, but more is needed. However, the neighboring townhouse-style River Howard Housing shows how low-rise subsidized housing works best in our neighborhood. The Cambridge Housing Authority and RCCC have shown us what works - why can't we follow this model?

We are abutters and close neighbors who ask for your help in sending this message to MHFA as this proposal is reviewed. We have met with the developer, and look forward to additional dialogue. But we cannot accept this building in its current form.

Thank you for your support and representation.

- 1 Warren Shear
- 2 Daniel Kamman
- 3 Frances Kamman
- 4 Mc Donald Green
- 5 Thelma ATKINS
- 6 Eldred Goddard
- 7 Josiah Goddard
- 8 David Osborn
- 9 Michael Jellie
- 10 Laetta Pindexter
- 11 Yvonne Jackson
- 12 John Campbell
- USA Sullo
- 14 Edward H. Boyce
- 15 [Signature]
- 16 Mrs. Marshall
- 17 Willie Marshall
- 18 John Godman

- 19 Gabrielle Sichel
- 20 [Signature]
- 21 Elizabeth L. Roberts
- 22 Rachel Berger
- 23 James Soter
- 24 Andy Chu
- 25 Lynne Moulton
- 26 Jessie Maver
- 27 Alice Jones
- 28 Joel Gump
- 29 Cheryl Klausner
- 30 Lawrence C. Morse
- 31 Regina Brazil
- 32 George Brazil
- 33 George Brazil Jr
- 34 Sarahi Mull
- 35 Bunny Campbell
- 36 Bernadette McAlhin

January 21  
~~December 11, 1988~~

To the Honorable, the City Council:

The proposal for a seven story apartment building at 239-253 River Street will have a devastating impact on our neighborhood, if built as planned. The overwhelming height, where no other building exceeds three stories, is unacceptable. Traffic and parking problems generated by 36 three and four bedroom apartments and 2500 square feet of commercial space supported by only 40 parking spaces add to our concerns.

We welcome the inclusion of 18 subsidized units through MHFA's SHARP program. Our neighborhood has a high proportion of subsidized housing already, but more is needed. However, the neighboring townhouse-style River Howard Housing shows how low-rise subsidized housing works best in our neighborhood. The Cambridge Housing Authority and RCCC have shown us what works - why can't we follow this model?

We are abutters and close neighbors who ask for your help in sending this message to MHFA as this proposal is reviewed. We have met with the developer, and look forward to additional dialogue. But we cannot accept this building in its current form.

Thank you for your support and representation.

37 Gabriel Colon  
38 Ada Colon  
39 Wanda Y. Rivera  
40 Goseita Beckford  
41 Donna Beckford  
42 Mary Perkins  
43 Carol Scalesse  
44 JoAnne Scalesse  
45 Duki Meyan  
46 Harriet Loring  
47 Jose M. Torres  
48 Leonilda Torres  
49 Keesha Greer  
50 Juan Cruz  
51 AEWOK HAOB  
52 Charlotte HAOB  
53 Allison M. Cump  
54 David G. Lalor

55 Paul C. Cruz  
56 Cheryl Mamer  
57 James H. MacNeil  
58 Cindy Mack  
59 Janet Souza  
60 Monica Cohen  
61 MAMU STEWART  
62 Jane Orr  
63 [Signature]  
64 Shea Wandre-Saul  
65 [Signature]  
66 Richard J. Wilkerson  
67 Robert P. Kochinghas  
68 Bruce A. Studley  
69 Sam R. Roden  
70 Velma Wyche



RECEIVED BY  
OFFICE OF CITY CLERK

1988 JAN 25 AM 9:51

January 21  
~~December 11~~, 1988

CAMBRIDGE MA.

To the Honorable, the City Council:

The proposal for a seven story apartment building at 239-253 River Street will have a devastating impact on our neighborhood, if built as planned. The overwhelming height, where no other building exceeds three stories, is unacceptable. Traffic and parking problems generated by 36 three and four bedroom apartments and 2500 square feet of commercial space supported by only 40 parking spaces add to our concerns.

We welcome the inclusion of 18 subsidized units through MHFA's SHARP program. Our neighborhood has a high proportion of subsidized housing already, but more is needed. However, the neighboring townhouse-style River Howard Housing shows how low-rise subsidized housing works best in our neighborhood. The Cambridge Housing Authority and RCCC have shown us what works - why can't we follow this model?

We are abutters and close neighbors who ask for your help in sending this message to MHFA as this proposal is reviewed. We have met with the developer, and look forward to additional dialogue. But we cannot accept this building in its current form.

Thank you for your support and representation.

Warren Shear

Daniel Kamman

Frances Kamman

Mr. Ronald Green

Thelma ATKINS

Eddiea Goddard

Joseph Goddard

Frank Osborn

Michael Felice

Loretta Pindexter

Yvonne Jackson

John Campbell

USA/Sullo

Edward H. Boyce

Pat Sullivan

Esther Marshall

Walter Mashua

John Goldman

Gabrielle Fichel

Al Joyce

Elizabeth L. Roberts

Rachel Berger

James Baker

Andy Chu

Lynne Moulton

Jessie Mauer

Alice Jones

Jul Gump

Cheryl Klavans

Lawrence C. Morse

Regina Brazil

George Brazil

George Brazil Jr

Sandi Mull

Burns Campbell

Bernadette McAlhin

January 21  
~~December 11, 1988~~

To the Honorable, the City Council:

The proposal for a seven story apartment building at 239-253 River Street will have a devastating impact on our neighborhood, if built as planned. The overwhelming height, where no other building exceeds three stories, is unacceptable. Traffic and parking problems generated by 36 three and four bedroom apartments and 2500 square feet of commercial space supported by only 40 parking spaces add to our concerns.

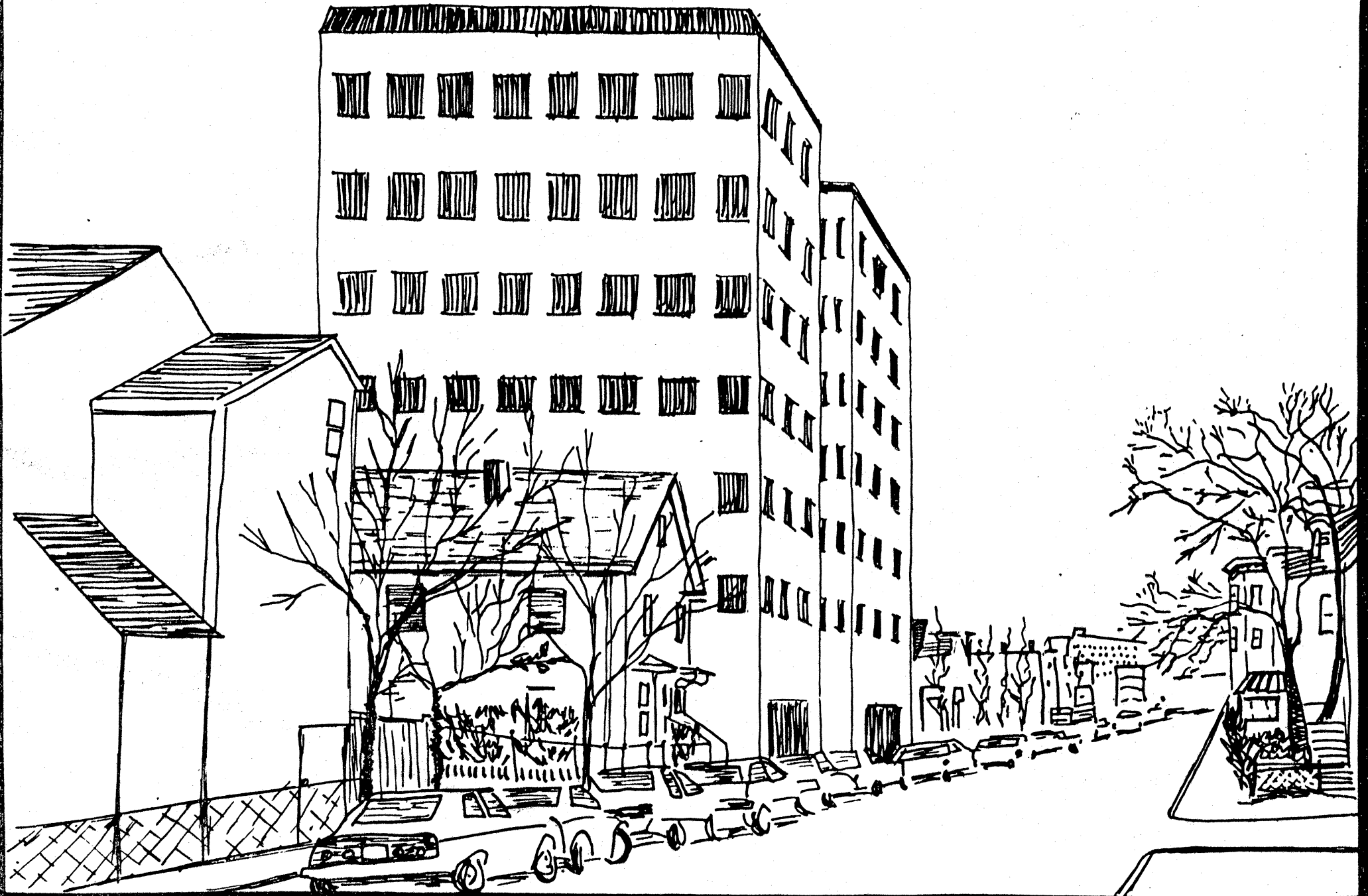
We welcome the inclusion of 18 subsidized units through MHFA's SHARP program. Our neighborhood has a high proportion of subsidized housing already, but more is needed. However, the neighboring townhouse-style River Howard Housing shows how low-rise subsidized housing works best in our neighborhood. The Cambridge Housing Authority and RCCC have shown us what works - why can't we follow this model?

We are abutters and close neighbors who ask for your help in sending this message to MHFA as this proposal is reviewed. We have met with the developer, and look forward to additional dialogue. But we cannot accept this building in its current form.

Thank you for your support and representation.

Gabriel Colon  
Ada Colon  
Wanda G. Rivera  
Gosetta Bedford  
Donna Bedford  
Mary Perkins  
Carol Scalesse  
Janne Scalesse  
Duke Meyer  
Harriet Loring  
Jose M. Torres  
Leonida Torres  
Lesta Greer  
Luan Ross  
AWAK HAOB  
Charlotte HAOB  
Allison M. Cunniff  
David J. Lalor

Paul C. Cruz  
Charles Mamer  
James H. MacNeil  
Cindy Mack  
Janet Souza  
Monica Colon  
MARIA STEWART  
Jane Orr  
Shea Wandre-Saul  
Richard J. Williamson  
Robert P. Kochoshas  
Bruce A. Studley  
Tom R. Roden  
Velma Wyche



RECEIVED BY  
OFFICE OF CITY CLERK

1988 JAN 25 AM 9:51

January 21  
~~December 11, 1988~~

CAMBRIDGE MA.

To the Honorable, the City Council:

The proposal for a seven story apartment building at 239-253 River Street will have a devastating impact on our neighborhood, if built as planned. The overwhelming height, where no other building exceeds three stories, is unacceptable. Traffic and parking problems generated by 36 three and four bedroom apartments and 2500 square feet of commercial space supported by only 40 parking spaces add to our concerns.

We welcome the inclusion of 18 subsidized units through MHFA's SHARP program. Our neighborhood has a high proportion of subsidized housing already, but more is needed. However, the neighboring townhouse-style River Howard Housing shows how low-rise subsidized housing works best in our neighborhood. The Cambridge Housing Authority and RCCC have shown us what works - why can't we follow this model?

We are abutters and close neighbors who ask for your help in sending this message to MHFA as this proposal is reviewed. We have met with the developer, and look forward to additional dialogue. But we cannot accept this building in its current form.

Thank you for your support and representation.

Warren Shear

Daniel Kamman

Frances Kamman

Mr. Ronald Green

Thelma ATKINS

Eddiea Goddard

Joseph Goddard

David Osborn

Michael Felice

Laetta Pindexter

Yvonne Hecker, 2002

John Campbell

USA/Sullo

Edward H. Boyce

Pat Sullivan

WAS. Marshall

Wife Martha

John Godman

Gabrielle Fichel

Al Dope

Elizabeth L. Roby

Rachel Beyer

James Tokar

Andy Chu

Lynne Moulton

Jessie Mauer

Elise Jones

Jul Gump

Cheryl Klausner

Lawrence C. Morse

Regina Brazil

George Brazil

George Brazil Jr

Samai Hall

Burn Campbell

Bernadette McCallin

January 21  
~~December 11, 1988~~

To the Honorable, the City Council:

The proposal for a seven story apartment building at 239-253 River Street will have a devastating impact on our neighborhood, if built as planned. The overwhelming height, where no other building exceeds three stories, is unacceptable. Traffic and parking problems generated by 36 three and four bedroom apartments and 2500 square feet of commercial space supported by only 40 parking spaces add to our concerns.

We welcome the inclusion of 18 subsidized units through MHFA's SHARP program. Our neighborhood has a high proportion of subsidized housing already, but more is needed. However, the neighboring townhouse-style River Howard Housing shows how low-rise subsidized housing works best in our neighborhood. The Cambridge Housing Authority and RCCC have shown us what works - why can't we follow this model?

We are abutters and close neighbors who ask for your help in sending this message to MHFA as this proposal is reviewed. We have met with the developer, and look forward to additional dialogue. But we cannot accept this building in its current form.

Thank you for your support and representation.

Gabriel Colon  
Ada Colon  
Wanda Y. Rivera  
Gosetta Bedford  
Dorinda Bedford  
Mary Perkins  
Carol Scalesse  
Joanne Scalesse  
Duke Meyer  
Harriet Loring  
Jose M. Torres  
Cleone da Torres  
Keesha Grece  
Juan Cruz  
Alewak HABOS  
Charlotte HABOS  
Allison M. Gump  
David J. Lalor

Paul C. Cruz  
Charles Manner  
James H. MacNeil  
Cindy Mack  
Janet Souza  
Monica Colon  
MANU SOUWANT  
Jane Orr  
Shea Wandre-Saul  
Richard J. Williamson  
Robert P. Kochoshas  
Bruce H. Studley  
Tom R. Roden  
Velma Wyche



RECEIVED BY  
CITY CLERK  
JAN 25 AM 9 51

January 21  
~~December 11, 1986~~

CAMBRIDGE MA.

To the Honorable, the City Council:

The proposal for a seven story apartment building at 239-253 River Street will have a devastating impact on our neighborhood, if built as planned. The overwhelming height, where no other building exceeds three stories, is unacceptable. Traffic and parking problems generated by 36 three and four bedroom apartments and 2500 square feet of commercial space supported by only 40 parking spaces add to our concerns.

We welcome the inclusion of 18 subsidized units through MHFA's SHARP program. Our neighborhood has a high proportion of subsidized housing already, but more is needed. However, the neighboring townhouse-style River Howard Housing shows how low-rise subsidized housing works best in our neighborhood. The Cambridge Housing Authority and RCCC have shown us what works - why can't we follow this model?

We are abutters and close neighbors who ask for your help in sending this message to MHFA as this proposal is reviewed. We have met with the developer, and look forward to additional dialogue. But we cannot accept this building in its current form.

Thank you for your support and representation.

Warren Shear  
 Daniel Kamman  
 Frances Kamman  
 Mc Donald Greer  
 Thelma ATKINS  
 Eddie Goddard  
 Josiah Goddard  
 James Osborn  
 Michael Jellie  
 Loretta Pindexter  
 Yvonne Greer, son  
 James Campbell  
 USA Sullo  
 Edward H. Boyce  
 [Signature]  
 Mrs. Marshall  
 Mrs. Marshall  
 John Godman

Gabrielle Fichel  
 [Signature]  
 Elizabeth L. Roby  
 Rachel Beecher  
 James Baker  
 Andy Chu  
 Lynne Moulton  
 Jessie Mauer  
 Alice Jones  
 Joel Gump  
 Cheryl Klaueman  
 Lawrence C. Morse  
 Regina Brazil  
 George Brazil  
 George Brazil Jr  
 Sarah Nell  
 Burn Campbell  
 Bernadette McCallin

January 21  
~~December 11~~, 1988

To the Honorable, the City Council:

The proposal for a seven story apartment building at 239-253 River Street will have a devastating impact on our neighborhood, if built as planned. The overwhelming height, where no other building exceeds three stories, is unacceptable. Traffic and parking problems generated by 36 three and four bedroom apartments and 2500 square feet of commercial space supported by only 40 parking spaces add to our concerns.

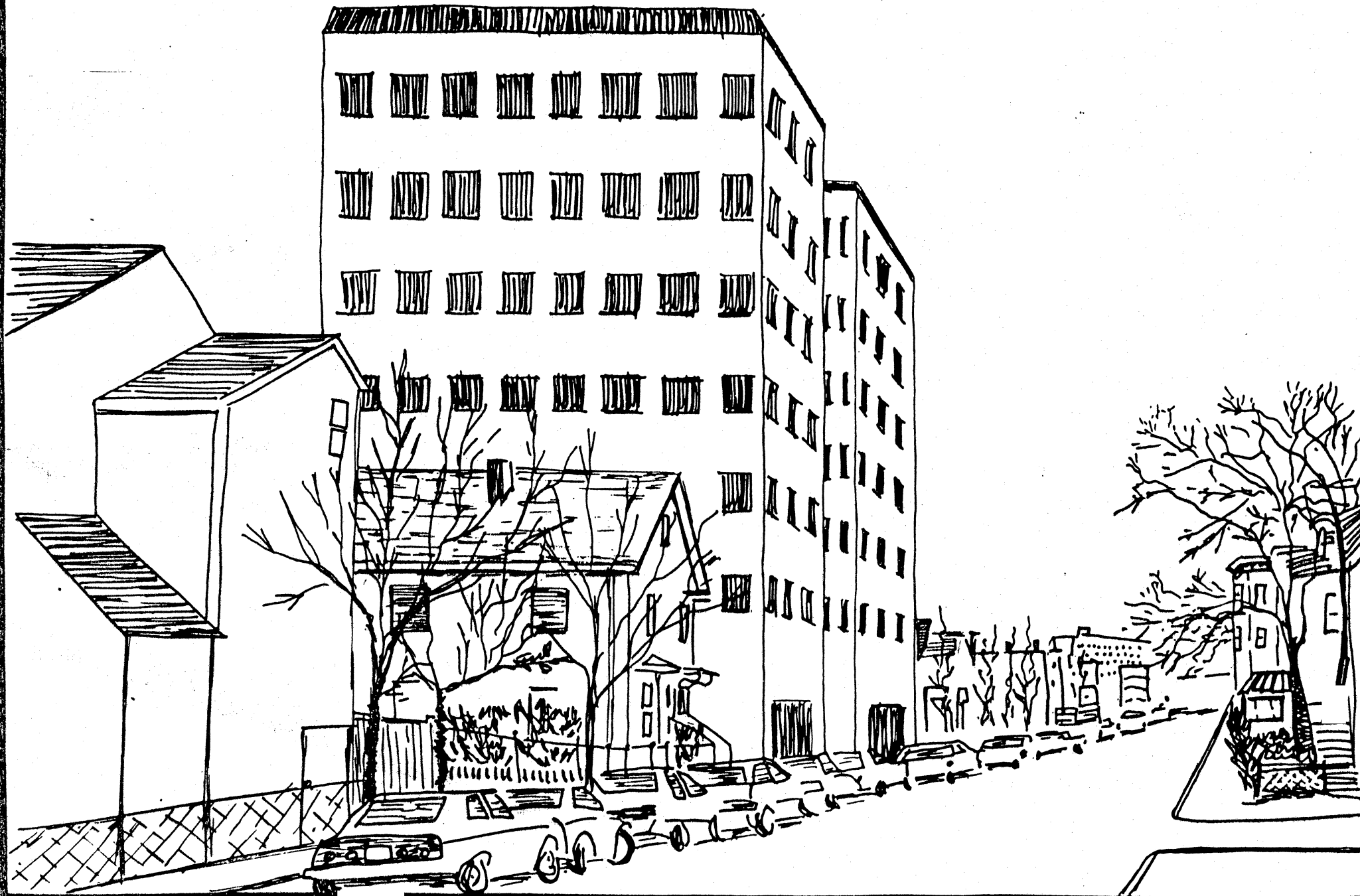
We welcome the inclusion of 18 subsidized units through MHFA's SHARP program. Our neighborhood has a high proportion of subsidized housing already, but more is needed. However, the neighboring townhouse-style River Howard Housing shows how low-rise subsidized housing works best in our neighborhood. The Cambridge Housing Authority and RCCC have shown us what works - why can't we follow this model?

We are abutters and close neighbors who ask for your help in sending this message to MHFA as this proposal is reviewed. We have met with the developer, and look forward to additional dialogue. But we cannot accept this building in its current form.

Thank you for your support and representation.

Gabriel Colon  
Ada Colon  
Wanda Y. Rivera  
Gosetta Bechford  
Donna Bechford  
Mary Perkins  
Carol Scalesse  
John Scalesse  
Duke Myer  
Harriet Loung  
Jose M. Torres  
Eleonora Torres  
Kisha Grece  
Juan Cruz  
Akwor KHAO  
Charlotte KHAO  
Allison M. Crump  
David J. Lalor

Paul C. Cruz  
Charles Mamer  
James H. McNeil  
Cindy Nash  
Janet Souza  
Monica Colon  
MANU STEWART  
Jane Orr  
Shea Wandre-Saul  
Richard J. Williamson  
Robert P. Kochugos  
Bruce A. Studley  
Tom R. Roden  
Velma Wyche



RECEIVED BY  
OFFICE OF CITY CLERK

1988 JAN 25 AM 9:54 ~~December 11, 1988~~ January 21

CAMBRIDGE MA

To the Honorable, the City Council:

The proposal for a seven story apartment building at 239-253 River Street will have a devastating impact on our neighborhood, if built as planned. The overwhelming height, where no other building exceeds three stories, is unacceptable. Traffic and parking problems generated by 36 three and four bedroom apartments and 2500 square feet of commercial space supported by only 40 parking spaces add to our concerns.

We welcome the inclusion of 18 subsidized units through MHFA's SHARP program. Our neighborhood has a high proportion of subsidized housing already, but more is needed. However, the neighboring townhouse-style River Howard Housing shows how low-rise subsidized housing works best in our neighborhood. The Cambridge Housing Authority and RCCC have shown us what works - why can't we follow this model?

We are abutters and close neighbors who ask for your help in sending this message to MHFA as this proposal is reviewed. We have met with the developer, and look forward to additional dialogue. But we cannot accept this building in its current form.

Thank you for your support and representation.

Warren Shear

Daniel Kamman

Frances Kamman

Mr. Ronald Green

Thelma ATKINS

Eddiea Goddard

Joshua Goddard

James Osborn

Michael Jellie

Loetta Pundexter

Yvonne Greene, 2002

John Campbell

USA/Sullo

Edward H. Boyce

Paul [unclear]

W.A.S. Marshall

Walter Mashua

John Godman

Gabrielle Fichel

[unclear]

Edwight L. Roberts

Rachel Beverer

James Tokar

Andy Chu

Lynne Moulton

Jesie Maver

Alice Jones

Jul Gup

Cheryl Klausner

Lawrence C. Morse

Regina Brazil

George Brazil

George Brazil Jr

Sandi Mull

Burn Campbell

Bernadette McAlhin

January 21  
~~December 11~~, 1988

To the Honorable, the City Council:

The proposal for a seven story apartment building at 239-253 River Street will have a devastating impact on our neighborhood, if built as planned. The overwhelming height, where no other building exceeds three stories, is unacceptable. Traffic and parking problems generated by 36 three and four bedroom apartments and 2500 square feet of commercial space supported by only 40 parking spaces add to our concerns.

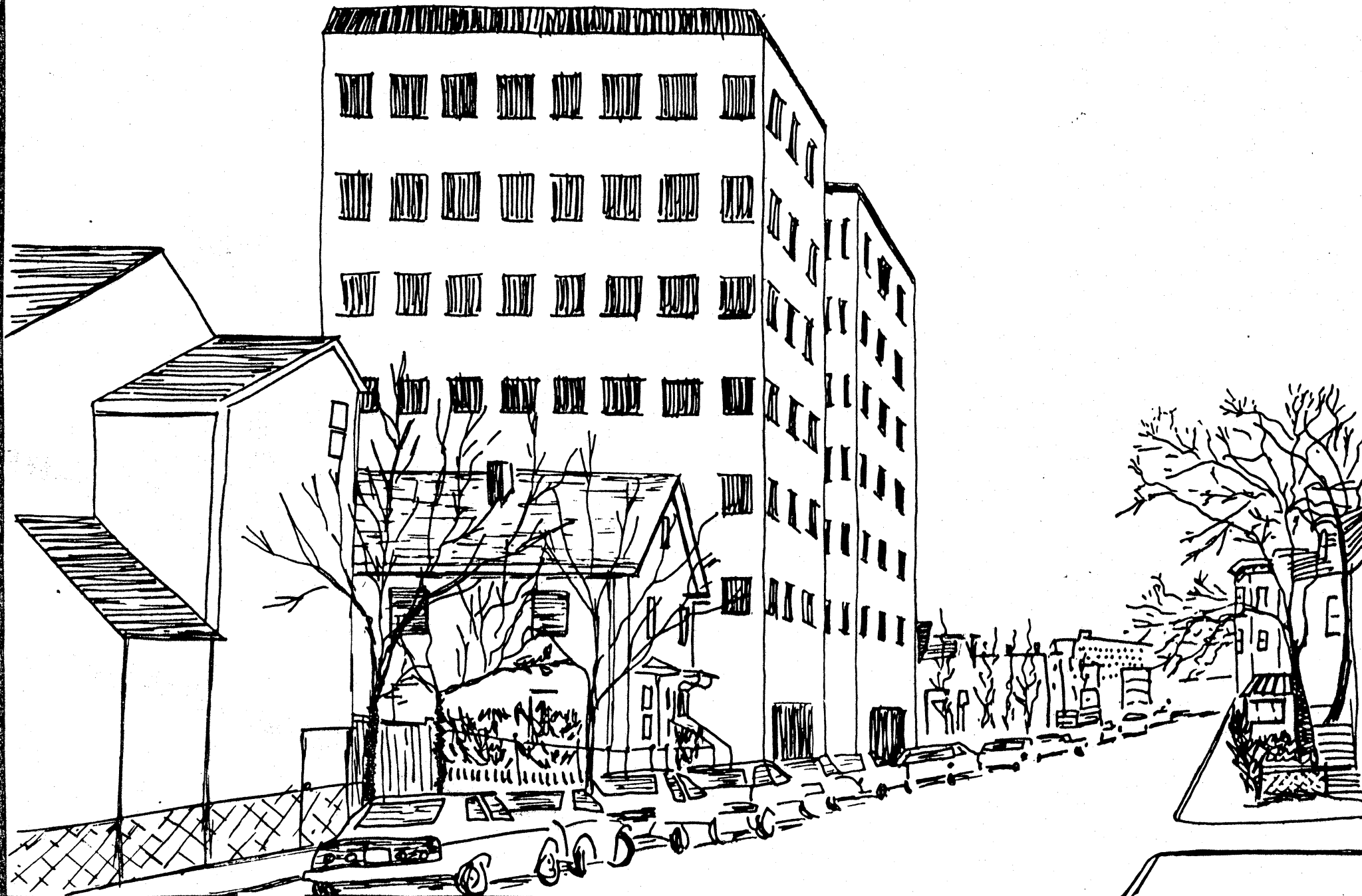
We welcome the inclusion of 18 subsidized units through MHFA's SHARP program. Our neighborhood has a high proportion of subsidized housing already, but more is needed. However, the neighboring townhouse-style River Howard Housing shows how low-rise subsidized housing works best in our neighborhood. The Cambridge Housing Authority and RCCC have shown us what works - why can't we follow this model?

We are abutters and close neighbors who ask for your help in sending this message to MHFA as this proposal is reviewed. We have met with the developer, and look forward to additional dialogue. But we cannot accept this building in its current form.

Thank you for your support and representation.

Gabriel Colon  
Ada Colon  
Wanda Y. Rivera  
Gosetta Beckford  
Donna Beckford  
Mary Perkins  
Carol Scalesse  
Johnnie Scalesse  
Duke Meyan  
Harriet Loring  
Jose M. Torres  
Eleonile de Torres  
Kisha Grace  
Juan Cruz  
Akwon KHAO  
Charlotte KHAO  
Allison M. Cump  
David J. Lalor

Paul C. Cruz  
Charles Manner  
James H. McNeil  
Cindy Mack  
Janet Souza  
Monica Colon  
MANUS STEWART  
Jane Orr  
Shea Vandre-Saul  
Richard J. Williamson  
Robert P. Kochoghas  
Bruce A. Studley  
Tom R. Roden  
Velma Wyche



RECEIVED BY  
OFFICE OF CITY CLERK

1988 JAN 25 AM 9:51

January 21  
~~December 11~~, 1988

CAMBRIDGE MA.

To the Honorable, the City Council:

The proposal for a seven story apartment building at 239-253 River Street will have a devastating impact on our neighborhood, if built as planned. The overwhelming height, where no other building exceeds three stories, is unacceptable. Traffic and parking problems generated by 36 three and four bedroom apartments and 2500 square feet of commercial space supported by only 40 parking spaces add to our concerns.

We welcome the inclusion of 18 subsidized units through MHFA's SHARP program. Our neighborhood has a high proportion of subsidized housing already, but more is needed. However, the neighboring townhouse-style River Howard Housing shows how low-rise subsidized housing works best in our neighborhood. The Cambridge Housing Authority and RCCC have shown us what works - why can't we follow this model?

We are abutters and close neighbors who ask for your help in sending this message to MHFA as this proposal is reviewed. We have met with the developer, and look forward to additional dialogue. But we cannot accept this building in its current form.

Thank you for your support and representation.

Warren Shear

Daniel Kamman

Frances Kamman

McDonald Green

Thelma ATKINS

Eddie Goddard

Josh Goddard

Frank Osborn

Michael Felice

Loretta Poirier

Yvonne Green

John Campbell

USA/Sullo

Edward H. Boyce

Pat Sullivan

W.S. Marshall

Walter Marshall

John Goodman

Gabrielle Fichel

Al Joyce

Elizabeth L. Roberts

Rachel Berger

James Baker

Andy Chu

Lynne Moulton

Jessie Mauer

Elise Jones

Jul Gump

Cheryl Klauerman

Lawrence C. Morse

Regina Brazil

George Brazil

George Brazil Jr

Sandi Muel

Burns Campbell

Bernadette McAlhin

January 21  
~~December 11, 1988~~

To the Honorable, the City Council:

The proposal for a seven story apartment building at 239-253 River Street will have a devastating impact on our neighborhood, if built as planned. The overwhelming height, where no other building exceeds three stories, is unacceptable. Traffic and parking problems generated by 36 three and four bedroom apartments and 2500 square feet of commercial space supported by only 40 parking spaces add to our concerns.

We welcome the inclusion of 18 subsidized units through MHFA's SHARP program. Our neighborhood has a high proportion of subsidized housing already, but more is needed. However, the neighboring townhouse-style River Howard Housing shows how low-rise subsidized housing works best in our neighborhood. The Cambridge Housing Authority and RCCC have shown us what works - why can't we follow this model?

We are abutters and close neighbors who ask for your help in sending this message to MHFA as this proposal is reviewed. We have met with the developer, and look forward to additional dialogue. But we cannot accept this building in its current form.

Thank you for your support and representation.

Gabriel Colono  
Ada Colono  
Wanda G. Rivera  
Gosetta Bedford  
Dorice Bedford  
Mary Perkins  
Carol Scalesse  
Joanne Scalesse  
Duke Meyer  
Harriet Loring  
Jose M. Torres  
Cleone de Torres  
Keesha Greer  
Jeanne King  
ALANOR KHABOZ  
Charlotte KHABOZ  
Allison M. Cump  
David J. Lalor

Paul C. Cruz  
Charles Mamer  
James H. MacNeil  
Cindy Mack  
Janet Souza  
Monica Cohen  
MANUS SERVANT  
Jane Orr  
Shea Wandre-Saul  
Richard J. Williamson  
Robert P. Kochinghas  
Bruce A. Studley  
Tom R. Roden  
Velma Wyche



RECEIVED BY  
OFFICE OF CITY CLERK

1988 JAN 25 AM 9:51

January 21  
~~December 11~~, 1988

CAMBRIDGE MA.

To the Honorable, the City Council:

The proposal for a seven story apartment building at 239-253 River Street will have a devastating impact on our neighborhood, if built as planned. The overwhelming height, where no other building exceeds three stories, is unacceptable. Traffic and parking problems generated by 36 three and four bedroom apartments and 2500 square feet of commercial space supported by only 40 parking spaces add to our concerns.

We welcome the inclusion of 18 subsidized units through MHFA's SHARP program. Our neighborhood has a high proportion of subsidized housing already, but more is needed. However, the neighboring townhouse-style River Howard Housing shows how low-rise subsidized housing works best in our neighborhood. The Cambridge Housing Authority and RCCC have shown us what works - why can't we follow this model?

We are abutters and close neighbors who ask for your help in sending this message to MHFA as this proposal is reviewed. We have met with the developer, and look forward to additional dialogue. But we cannot accept this building in its current form.

Thank you for your support and representation.

Warren Shear

Daniel Kamman

Frances Kamman

McJorald Greer

Thelma ATKINS

Eddiea Goddard

Joseph Goddard

David Osborn

Michael Jellie

Loetta Pindexter

Yvonne Greer, 2022

John Campbell

USA/Sullo

Edward H. Boyce

*[Signature]*

WAS. Marshall

Wife Martha

*[Signature]*

Gabrielle Fichel

*[Signature]*

Elizabeth L. Roberts

Rachel Beecher

James Tokar

Andy Chu.

Lynne Moulton

Jessie Mauer

Elise Jones

Jul Gump

Cheryl Klarsen

Lawrence C. Morse

Regina Brazil

George Brazil

George Brazil Jr

Sandi Mull

Burn Campbell

Bernadette McAlhin

January 21  
~~December 11, 1988~~

To the Honorable, the City Council:

The proposal for a seven story apartment building at 239-253 River Street will have a devastating impact on our neighborhood, if built as planned. The overwhelming height, where no other building exceeds three stories, is unacceptable. Traffic and parking problems generated by 36 three and four bedroom apartments and 2500 square feet of commercial space supported by only 40 parking spaces add to our concerns.

We welcome the inclusion of 18 subsidized units through MHFA's SHARP program. Our neighborhood has a high proportion of subsidized housing already, but more is needed. However, the neighboring townhouse-style River Howard Housing shows how low-rise subsidized housing works best in our neighborhood. The Cambridge Housing Authority and RCCC have shown us what works - why can't we follow this model?

We are abutters and close neighbors who ask for your help in sending this message to MHFA as this proposal is reviewed. We have met with the developer, and look forward to additional dialogue. But we cannot accept this building in its current form.

Thank you for your support and representation.

Gabriel Colon  
Ada Colon  
Wanda J. Rivera  
Gosetta Bedford  
Donna Bedford  
Mary Perkins  
Carol Scalesse  
John Scalesse  
Duke Meyer  
Harriet Loring  
Jose M. Torres  
Leonilda Torres  
Keesa Greer  
Jean Ross  
Awar KHAO  
Charilste KHAO  
Allison M. Crump  
David J. Lalanon

Paul C. Cruz  
Charles Mamer  
James H. MacNeil  
Cindy Mack  
Janet Souza  
Monica Cohen  
MAMU STEWART  
Jane Orr  
Shea Vandere-Sand  
Richard J. Williamson  
Robert P. Kochoshes  
Bruce A. Studley  
Tom R. Roden  
Velma Wyche



RECEIVED BY  
OFFICE OF CITY CLERK

1988 JAN 25 AM 9:52

CAMBRIDGE MA.

January 21  
~~December 11~~, 1988

To the Honorable, the City Council:

The proposal for a seven story apartment building at 239-253 River Street will have a devastating impact on our neighborhood, if built as planned. The overwhelming height, where no other building exceeds three stories, is unacceptable. Traffic and parking problems generated by 36 three and four bedroom apartments and 2500 square feet of commercial space supported by only 40 parking spaces add to our concerns.

We welcome the inclusion of 18 subsidized units through MHFA's SHARP program. Our neighborhood has a high proportion of subsidized housing already, but more is needed. However, the neighboring townhouse-style River Howard Housing shows how low-rise subsidized housing works best in our neighborhood. The Cambridge Housing Authority and RCCC have shown us what works - why can't we follow this model?

We are abutters and close neighbors who ask for your help in sending this message to MHFA as this proposal is reviewed. We have met with the developer, and look forward to additional dialogue. But we cannot accept this building in its current form.

Thank you for your support and representation.

Warren Shear

Daniel Kamman

Frances Kamman

McDonald Greer

Thelma ATKINS

Eddiea Goddard

Joshua Goddard

Tom O'Connor

Michael Felice

Laetta Paine

Yvonne Jackson

John Campbell

USA/Sullo

Edward H. Boyce

*[Signature]*

W.S. Marshall

Walter Marshall

John Godman

Gabrielle Fichel

*[Signature]*

Elizabeth L. Roberts

Rachel Berger

James Baker

Andy Chu

Lynne Moulton

Jessie Mauer

Alice Jones

Jul Gup

Cheryl Klauerman

Lawrence C. Morse

Regina Brazil

George Brazil

George Brazil Jr

Sarahi Mull

Burn Campbell

Bernadette McCallin

January 21  
~~December 11, 1988~~

To the Honorable, the City Council:

The proposal for a seven story apartment building at 239-253 River Street will have a devastating impact on our neighborhood, if built as planned. The overwhelming height, where no other building exceeds three stories, is unacceptable. Traffic and parking problems generated by 36 three and four bedroom apartments and 2500 square feet of commercial space supported by only 40 parking spaces add to our concerns.

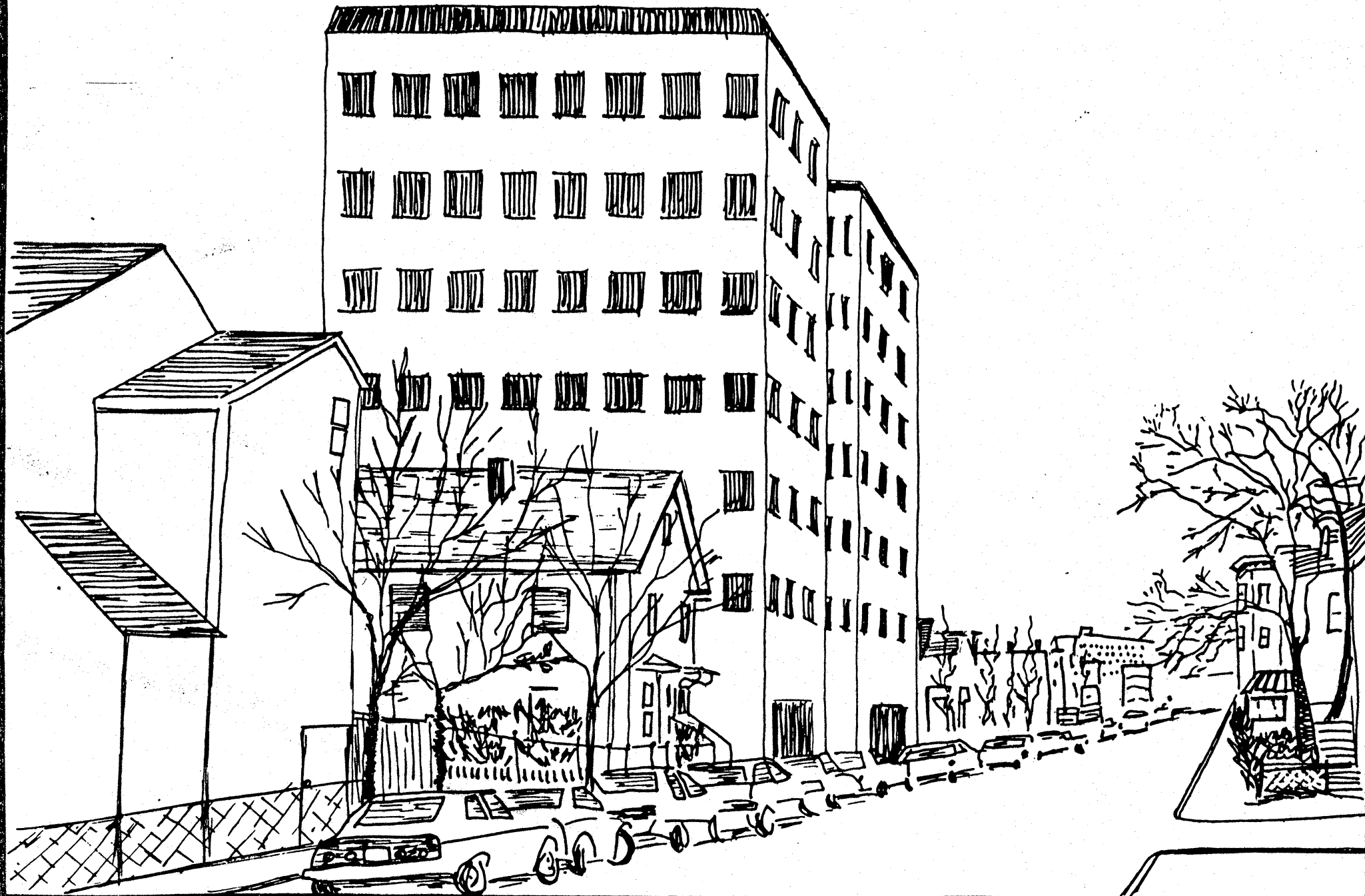
We welcome the inclusion of 18 subsidized units through MHFA's SHARP program. Our neighborhood has a high proportion of subsidized housing already, but more is needed. However, the neighboring townhouse-style River Howard Housing shows how low-rise subsidized housing works best in our neighborhood. The Cambridge Housing Authority and RCCC have shown us what works - why can't we follow this model?

We are abutters and close neighbors who ask for your help in sending this message to MHFA as this proposal is reviewed. We have met with the developer, and look forward to additional dialogue. But we cannot accept this building in its current form.

Thank you for your support and representation.

Gabriel Colon  
Ada Colon  
Wanda J. Rivera  
Gosetta Bedford  
Doreen Bedford  
Mary Perkins  
Carol Scalesse  
Johnnie Scalesse  
Dorothy Meyer  
Harriet Loring  
Jose M. Torres  
Cleone de Torres  
Kresta Grece  
Leara Kross  
Awar KHAOD  
Charlotte KHAOD  
Allison M. Cunniff  
David J. Lalanon

Paul C. Cruz  
Charles Mamer  
James H. MacNeil  
Cindy Mack  
Janet Souza  
Monica Cohen  
MARIA STEWART  
Jane Orr  
Shea Wandre-Saul  
Richard J. Wilkerson  
Robert P. Kochoshas  
Bruce A. Studley  
Tom R. Gorden  
Velma Wyche



RECEIVED BY  
OFFICE OF CITY CLERK

1988 JAN 25 AM 9:52

January 21  
~~December 11, 1988~~

CAMBRIDGE MA.

To the Honorable, the City Council:

The proposal for a seven story apartment building at 239-253 River Street will have a devastating impact on our neighborhood, if built as planned. The overwhelming height, where no other building exceeds three stories, is unacceptable. Traffic and parking problems generated by 36 three and four bedroom apartments and 2500 square feet of commercial space supported by only 40 parking spaces add to our concerns.

We welcome the inclusion of 18 subsidized units through MHFA's SHARP program. Our neighborhood has a high proportion of subsidized housing already, but more is needed. However, the neighboring townhouse-style River Howard Housing shows how low-rise subsidized housing works best in our neighborhood. The Cambridge Housing Authority and RCCC have shown us what works - why can't we follow this model?

We are abutters and close neighbors who ask for your help in sending this message to MHFA as this proposal is reviewed. We have met with the developer, and look forward to additional dialogue. But we cannot accept this building in its current form.

Thank you for your support and representation.

Warren Shear

Daniel Kamman

Frances Kamman

McDonald Greer

Thelma ATKINS

Eldica Goddard

Nesbit Goddard

Jane Cooper

Michael Felice

Loetta Pindexter

Yvonne Greer, 2022

John Campbell

USA/Sullo

Edward H. Boyce

Paul Smith

Erin S. Marshall

Wife Martha

John Godman

Gabrielle Fichel

John Doe

Elizabeth L. Roberts

Rachel Berger

James Baker

Andy Chu.

Leanne Moulton

Jessie Mauer

Alice Jones

Julie Guy

Cheryl Klausem

Lawrence C. Morse

Regina Brazil

George Brazil

George Brazil Jr

Nanci Hall

Burns Campbell

Bernadette McCallin

January 21  
~~December 11, 1988~~

To the Honorable, the City Council:

The proposal for a seven story apartment building at 239-253 River Street will have a devastating impact on our neighborhood, if built as planned. The overwhelming height, where no other building exceeds three stories, is unacceptable. Traffic and parking problems generated by 36 three and four bedroom apartments and 2500 square feet of commercial space supported by only 40 parking spaces add to our concerns.

We welcome the inclusion of 18 subsidized units through MHFA's SHARP program. Our neighborhood has a high proportion of subsidized housing already, but more is needed. However, the neighboring townhouse-style River Howard Housing shows how low-rise subsidized housing works best in our neighborhood. The Cambridge Housing Authority and RCCC have shown us what works - why can't we follow this model?

We are abutters and close neighbors who ask for your help in sending this message to MHFA as this proposal is reviewed. We have met with the developer, and look forward to additional dialogue. But we cannot accept this building in its current form.

Thank you for your support and representation.

Gabriel Colon  
Ada Colon  
Wanda J. Rivera  
Gosetta Bedford  
Donna Bedford  
Mary Perkins  
Carol Scalesse  
Joanne Scalesse  
Duke Meyer  
Harriet Loring  
Jose M. Torres  
Leonida Torres  
Kestla Grece  
Liane Koo  
Awar KHAOS  
Charlotte KHAOS  
Allison M. Gump  
David J. Lalor

Paul C. Cruz  
Charles Mamer  
James H. MacNeil  
Cindy Mack  
Janet Souza  
Monica Colon  
MANU SOUWANT  
Jane Orr  
Shea Wandre-Saul  
Richard J. Williamson  
Robert P. Kochoghas  
Bruce A. Studley  
Tom R. Kaden  
Velma Wyche



6.

Cal # 55-91

Petition of Warren Shear & 69 abutters & close neighbors of the proposed 7-story apt. bldg. at 239-253 River St., stating this proposed bldg. will have a devastating impact on the neighborhood & requesting the Council's assistance in expressing their concerns to the MHFA as this proposal is reviewed.

2/8/88 No action taken  
Placed on file under  
Rule 19 of the City  
Council rules.

In City Council,

February 1, 1988

Referred to Committee  
on

Housing and Economic  
Development

2/1/88 Charter righted  
by C. Walsh