



# City of Cambridge

70.

IN CITY COUNCIL  
April 27, 1998

COUNCILLOR BORN  
COUNCILLOR DAVIS  
MAYOR DUEHAY  
VICE MAYOR GALLUCCIO  
COUNCILLOR REEVES  
COUNCILLOR RUSSELL  
COUNCILLOR SULLIVAN  
COUNCILLOR TOOMEY  
COUNCILLOR TRIANTAFILLOU

WHEREAS: The City Council and various members thereof have recently and frequently raised concerns about the availability of low cost or free transportation to serve the needs of the City's senior citizens; and

WHEREAS: A useful service is provided to seniors of Cambridge through the Shepherd's Center of Cambridge-Somerville which offers an Escort Transportation Service tailored to the needs of the senior citizen community of Cambridge, staffed in large part by volunteer drivers, founded by the American Baptist Elder Ministries of Massachusetts and Youville Lifecare and sponsored by several Cambridge Churches; now therefore be it

ORDERED: That the City Council go on record thanking the sponsoring organizations for sponsoring this service and request the City Manager to take steps to publicize the availability of this service through appropriate City agencies.

In City Council April 27, 1998.

Adopted by the affirmative vote of nine members.

Attest:- D. Margaret Drury, City Clerk.

A true copy;

ATTEST:-

A handwritten signature in cursive script that reads "D. Margaret Drury".

D. Margaret Drury  
City Clerk



## The Shepherd's Center of Cambridge-Somerville

#70

*"As older adults add more days to their lives, Shepherd's Centers add more life to their days."*

---

April 13, 1998

Kathleen Born, City Councillor  
3 Walnut Ave  
Cambridge, MA 02140

Dear Councillor Born,

I am writing to introduce you to the Shepherd's Center of Cambridge-Somerville. One of our members was watching last week's council meeting on Cambridge Cable TV when you mentioned having heard from older constituents in need of transportation. The Shepherd's Center offers an Escort Transportation Service to Cambridge seniors and people with disabilities. I am enclosing our brochure. Please feel free to refer constituents to our office.

In addition to the transportation program we also sponsor a monthly interfaith supper and fellowship. Again, feel free to alert any constituents to our April gathering. A flier is also enclosed.

I hope the enclosed information is helpful. Feel free to call the office, Monday through Thursday afternoons if you have any questions.

Sincerely,

Katherine Doolittle  
Administrative Assistant

---

Cambridge:	617/876-4344 ext. 3725 (phone)	617/547-5501 (fax)
Arlington:	781/646-6115 (phone)	781/646-2528 (fax)

---

1575 Cambridge Street, Cambridge, MA 02138-4398

## Sponsors

Sponsoring congregations provide participatory, in-kind, and financial support as well as share the Shepherd's Center vision and philosophy. As the *founding organizations*, American Baptist Elder Ministries of MA and Youville Lifecare have provided technical assistance, financing, staffing, and planning for the development of the Shepherd's Center of Cambridge-Somerville.

In addition, Shepherd's Centers around the country work closely with community agencies, businesses, and individuals. Many become affiliate members.

### Sponsoring Congregations in Cambridge and Somerville:

- Community Baptist Church
- Faith Lutheran Church
- First Baptist Church, Cambridge
- Metropolitan Baptist Church
- St. Benedict's Church
- St. Mary of the Annunciation Church
- St. Paul's Church

### Founding Organizations:

- American Baptist Elder Ministries of MA
- and
- Youville Lifecare

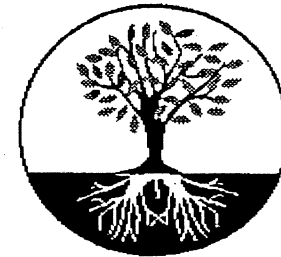
*The Shepherd's Center of Cambridge-Somerville is affiliated with the Shepherd's Centers of America.*



**The Shepherd's Center  
of Cambridge-Somerville**

1575 Cambridge Street  
Cambridge, MA 02138  
617/876-4344 ext. 3725;  
617/646-6115

# Shepherd's Center of Cambridge-Somerville



## Working to Improve Quality of Life in Later Years

*Founded and co-sponsored  
by participating congregations,  
American Baptist Elder Ministries  
of MA, and Youville Lifecare*

*Office*

1575 Cambridge Street  
Cambridge, MA 02138

*"As older adults add more days to their lives,  
Shepherd's Centers add more life to their days."*

### Purpose of the Program

The Escort Transportation Program provides volunteer drivers who accompany and transport people to:

- medical appointments;
- grocery stores;
- places of worship;
- hair salons;
- other local trips.

The service is provided by licensed Massachusetts drivers who use their own vehicles and remain with their passenger to assist and support as needed.

### Who Can Use the Service?

Escort Transportation is available to persons 60 and older, as well as non-elderly persons with physical disabilities, who are ambulatory (canes and walkers allowed) but unable to drive themselves and with no ready access to transportation by family or friends.

Priority for escort transportation requests is given to members of the Shepherd's Center of Cambridge-Somerville and to members of sponsoring congregations.

All other requests are limited to residents of Cambridge and Somerville and are handled on a volunteer-available basis.

### How Do You Get This Service?

The service will begin on a limited basis, depending on driver availability. Call the Shepherd's Center as far in advance of your trip as possible. It is necessary to make a separate telephone call to the office for each round trip.

Office hours are Mondays through Fridays, 9 a.m. to 12 noon.

If no one is in the office, please leave the information on the answering machine and someone will get back to you as soon as possible.

*The Shepherd's Center*

*phone number is*

~~617/354-9515~~  
876 4344 x 3725

### Client Information

We recommend a voluntary donation to the Center for each round trip.

Each rider is responsible for paying any parking fees. *If a rider has a handicap license tag, this should be given to the volunteer driver the day of the trip.* Each roundtrip should be local and not exceed 3-4 hours.

### How to Become an Escort Driver

One or two trips a month by a volunteer escort driver can make an important difference in the life of an older person. Each volunteer is expected to commit between 2 1/2 to 4 hours per trip.

Volunteer escort drivers must have valid Massachusetts drivers licenses, the insurance required to drive in this state, and a good driving record. In addition, each volunteer is expected to be sensitive to the needs of passengers.

To become a volunteer driver, contact the Shepherd's Center of Cambridge-Somerville. You will be sent an application and will receive additional information about the program.

*Please note:* The Center provides excess auto liability insurance for drivers. This insurance extends the limits of the driver's own policy.

### For More Information...

For additional information about the Shepherd's Center and the Escort Transportation service, please contact:

Anne Harrington, Director  
Shepherd's Center of Cambridge-Somerville  
1575 Cambridge Street  
Cambridge, MA 02138

~~617/354-9515~~  
876 4344 x 3725

## What Is a Shepherd's Center?

The Shepherd's Center philosophy is that later life is a time for personal growth and development, service, learning, spiritual reflection, discovery of new talents and opportunities, and connection with others. This message is altogether different from the dominant message of our culture — to “drop out,” “relax,” and “retire” from all that a person has been and can become.

Shepherd's Centers work with individuals, congregations, community groups, and social service agencies to put this new understanding of later life into practice.

The first Shepherd's Center was started in 1972 by Rev. Elbert Cole in Kansas City, MO. Today, there are more than 90 Centers and countless volunteers around the country.

Local Shepherd's Centers are highly diverse in size and membership but they are all based on the same principle — to work *in partnership with older adults* to develop activities, programs, and services that foster:

- social contact
- community service
- improved health and well-being
- lifelong learning
- spiritual development

### *Everyone Is Welcome*

Although Shepherd's Centers are sponsored by a variety of faith-based denominations, Shepherd's Center programs and activities are open to all, regardless of religious persuasion.

## The Shepherd's Center of Cambridge-Somerville

### *First in New England*

The Shepherd's Center of Cambridge-Somerville is the first of its kind in New England. It is a new organization, planned by congregations, American Baptist Elder Ministries of MA, and Youville Lifecare in 1996 and officially launched in 1997. To date, several founding sponsors have committed to supporting the program, a community network of older adults and others has been developed, and an organizational structure has been created.

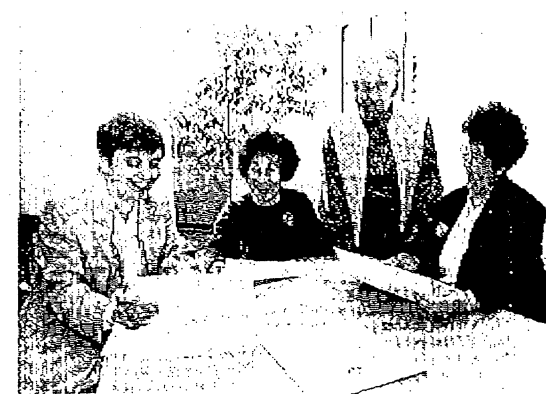
### *Mission*

The Shepherd's Center of Cambridge-Somerville is an organization designed to bring older adults together within interfaith, community-based centers and empower them to develop, provide, and participate in programs and services which improve the quality of life — physically, spiritually, emotionally, intellectually, and socially — for older adults and others in their communities.

### *Activities*

Shepherd's Center programs and services in the Cambridge-Somerville area include:

- Monthly fellowship.
- Conferences and workshops which include “Shaping Our Future As We Grow Older” (life stories) and an interfaith exploration of spirituality and aging.
- An escort transportation service and a transportation clearinghouse (in process).
- Other activities and programs which develop from the interests/needs/resources of older adults.



Steering Committee members (pictured from left to right) are: Anne Harrington, Annie Bombard, Sister Therese Capistran, and Joan Union.

Other Committee members include: Rev. Byron Bassett, Elizabeth Callahan, Sheila Callahan, Kathryn Erat, Frances Tingle, Hildegard Gustafson, and representatives from St. Benedict's Church.

## **For More Information...**

For additional information about the Shepherd's Center or to find out the date and location of upcoming events, please contact:

Anne Harrington  
 Director of the C-S Shepherd's Center  
 617/876-4344, ext. 3725  
 617/646-6115

*The Shepherd's Center invites you to participate!*

# The Shepherd's Center of Cambridge-Somerville

*First in New England*

The Shepherd's Center of Cambridge-Somerville is the first of its kind in New England. It is a new organization, planned by congregations, American Baptist Elder Ministries of Massachusetts, and Youville Lifecare in 1996 and officially launched in 1997.

Sponsoring congregations include: Community Baptist Church, Faith Lutheran Church, First Baptist Church (Cambridge), Metropolitan Baptist Church, St. Mary of the Annunciation Church, St. Benedict's Church, St. Paul's Church, and Old Cambridge Baptist Church.

### *Mission*

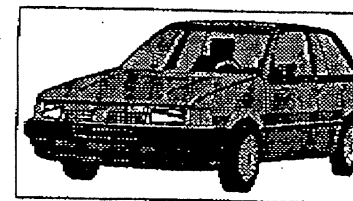
The Shepherd's Center of Cambridge-Somerville is an organization designed to bring older adults together within inter-faith, community-based centers and empower them to develop, provide, and participate in programs and services which improve the quality of life — physically, spiritually, emotionally, intellectually, and socially — for older adults and others in their communities. The Center is open to all, with or without religious affiliation.

### *Activities*

Shepherd's Center programs and services in the Cambridge-Somerville area include: monthly fellowship with speaker, conferences, workshops, and an Escort Transportation service.

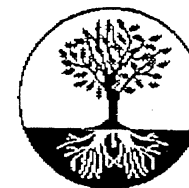
The Shepherd's Center of Cambridge-Somerville  
1575 Cambridge Street  
Cambridge, MA 02138

## Escort Transportation Service



A Service of:

**The Shepherd's Center  
of  
Cambridge-Somerville**



*The Shepherd's Center of C/S — founded and co-sponsored by participating congregations, American Baptist Elder Ministries of MA, and Youville Lifecare*

Board Order # 4.

70

Whereas: The City Council and various members thereof have recently & frequently raised concerns about the availability of low cost or free transportation to serve the needs of the City's senior citizens, and

Whereas A useful service is provided to seniors of Cambridge through the Shepherd's Center of Cambridge-Somerville which offers an "Escort Transportation Service" tailored to the needs of the Senior Citizen Community of Cambridge, staffed in large part by volunteer drivers, founded by the American Baptist Elder Ministries of Massachusetts and Youville LifeCare and sponsored by several Cambridge Churches, therefore be it

Ordered That the City Council go on record thanking the sponsoring organizations for sponsoring this service and request the City Manager to take steps to publicize the availability of this service through appropriate city agencies.

(see back up material)  
5 pages



## *The Shepherd's Center of Cambridge-Somerville*

*"As older adults add more days to their lives, Shepherd's Centers add more life to their days."*

---

April 13, 1998

Kathleen Born, City Councillor  
3 Walnut Ave  
Cambridge, MA 02140

Dear Councillor Born,

I am writing to introduce you to the Shepherd's Center of Cambridge-Somerville. One of our members was watching last week's council meeting on Cambridge Cable TV when you mentioned having heard from older constituents in need of transportation. The Shepherd's Center offers an Escort Transportation Service to Cambridge seniors and people with disabilities. I am enclosing our brochure. Please feel free to refer constituents to our office.

In addition to the transportation program we also sponsor a monthly interfaith supper and fellowship. Again, feel free to alert any constituents to our April gathering. A flier is also enclosed.

I hope the enclosed information is helpful. Feel free to call the office, Monday through Thursday afternoons if you have any questions.

Sincerely,

Katherine Doolittle  
Administrative Assistant

---

Cambridge:	617/876-4344 ext. 3725 (phone)	617/547-5501 (fax)
Arlington:	781/646-6115 (phone)	781/646-2528 (fax)

---

1575 Cambridge Street, Cambridge, MA 02138-4398

## Sponsors

*Sponsoring congregations* provide participatory, in-kind, and financial support as well as share the Shepherd's Center vision and philosophy. As the *founding organizations*, American Baptist Elder Ministries of MA and Youville Lifecare have provided technical assistance, financing, staffing, and planning for the development of the Shepherd's Center of Cambridge-Somerville.

In addition, Shepherd's Centers around the country work closely with community agencies, businesses, and individuals. Many become affiliate members.

### Sponsoring Congregations in Cambridge and Somerville:

Community Baptist Church  
Faith Lutheran Church  
First Baptist Church, Cambridge  
Metropolitan Baptist Church  
St. Benedict's Church  
St. Mary of the Annunciation Church  
St. Paul's Church

### Founding Organizations:

American Baptist Elder Ministries of MA  
and  
Youville Lifecare

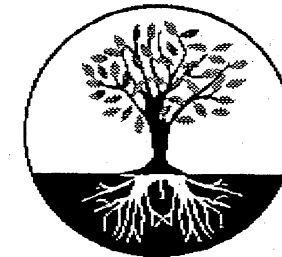
*The Shepherd's Center of Cambridge-Somerville  
is affiliated with the Shepherd's Centers  
of America.*



**The Shepherd's Center  
of Cambridge-Somerville**

1575 Cambridge Street  
Cambridge, MA 02138  
617/876-4344 ext. 3725;  
617/646-6115

# Shepherd's Center of Cambridge-Somerville



**Working to Improve  
Quality of Life  
in Later Years**

*Founded and co-sponsored  
by participating congregations,  
American Baptist Elder Ministries  
of MA, and Youville Lifecare*

*Office*

1575 Cambridge Street  
Cambridge, MA 02138

*"As older adults add more days to their lives,  
Shepherd's Centers add more life to their days."*

## Purpose of the Program

The Escort Transportation Program provides volunteer drivers who accompany and transport people to:

- medical appointments;
- grocery stores;
- places of worship;
- hair salons;
- other local trips.

The service is provided by licensed Massachusetts drivers who use their own vehicles and remain with their passenger to assist and support as needed.

## Who Can Use the Service?

Escort Transportation is available to persons 60 and older, as well as non-elderly persons with physical disabilities, who are ambulatory (canes and walkers allowed) but unable to drive themselves and with no ready access to transportation by family or friends.

Priority for escort transportation requests is given to members of the Shepherd's Center of Cambridge-Somerville and to members of sponsoring congregations.

All other requests are limited to residents of Cambridge and Somerville and are handled on a volunteer-available basis.

## How Do You Get This Service?

The service will begin on a limited basis, depending on driver availability. Call the Shepherd's Center as far in advance of your trip as possible. It is necessary to make a separate telephone call to the office for each round trip.

Office hours are Mondays through Fridays, 9 a.m. to 12 noon.

If no one is in the office, please leave the information on the answering machine and someone will get back to you as soon as possible.

---

**The Shepherd's Center**  
phone number is

~~617/354-9515~~  
876 4344 x 3725

## Client Information

We recommend a voluntary donation to the Center for each round trip.

Each rider is responsible for paying any parking fees. *If a rider has a handicap license tag, this should be given to the volunteer driver the day of the trip.* Each roundtrip should be local and not exceed 3-4 hours.

## How to Become an Escort Driver

One or two trips a month by a volunteer escort driver can make an important difference in the life of an older person. Each volunteer is expected to commit between 2 1/2 to 4 hours per trip.

Volunteer escort drivers must have valid Massachusetts drivers licenses, the insurance required to drive in this state, and a good driving record. In addition, each volunteer is expected to be sensitive to the needs of passengers.

To become a volunteer driver, contact the Shepherd's Center of Cambridge-Somerville. You will be sent an application and will receive additional information about the program.

*Please note:* The Center provides excess auto liability insurance for drivers. This insurance extends the limits of the driver's own policy.

## For More Information...

For additional information about the Shepherd's Center and the Escort Transportation service, please contact:

Anne Harrington, Director  
Shepherd's Center of Cambridge-Somerville  
1575 Cambridge Street  
Cambridge, MA 02138  
~~617/354-9515~~

876 4344 x 3725

## What Is a Shepherd's Center?

The Shepherd's Center philosophy is that later life is a time for personal growth and development, service, learning, spiritual reflection, discovery of new talents and opportunities, and connection with others. This message is altogether different from the dominant message of our culture — to “drop out,” “relax,” and “retire” from all that a person has been and can become.

Shepherd's Centers work with individuals, congregations, community groups, and social service agencies to put this new understanding of later life into practice.

The first Shepherd's Center was started in 1972 by Rev. Elbert Cole in Kansas City, MO. Today, there are more than 90 Centers and countless volunteers around the country.

Local Shepherd's Centers are highly diverse in size and membership but they are all based on the same principle — to work *in partnership with older adults* to develop activities, programs, and services that foster:

- social contact
- community service
- improved health and well-being
- lifelong learning
- spiritual development

### *Everyone Is Welcome*

Although Shepherd's Centers are sponsored by a variety of faith-based denominations, Shepherd's Center programs and activities are open to all, regardless of religious persuasion.

## The Shepherd's Center of Cambridge-Somerville

### *First in New England*

The Shepherd's Center of Cambridge-Somerville is the first of its kind in New England. It is a new organization, planned by congregations, American Baptist Elder Ministries of MA, and Youville Lifecare in 1996 and officially launched in 1997. To date, several founding sponsors have committed to supporting the program, a community network of older adults and others has been developed, and an organizational structure has been created.

### *Mission*

The Shepherd's Center of Cambridge-Somerville is an organization designed to bring older adults together within interfaith, community-based centers and empower them to develop, provide, and participate in programs and services which improve the quality of life — physically, spiritually, emotionally, intellectually, and socially — for older adults and others in their communities.

### *Activities*

Shepherd's Center programs and services in the Cambridge-Somerville area include:

- Monthly fellowship.
- Conferences and workshops which include “Shaping Our Future As We Grow Older” (life stories) and an interfaith exploration of spirituality and aging.
- An escort transportation service and a transportation clearinghouse (in process).
- Other activities and programs which develop from the interests/needs/resources of older adults.



Steering Committee members (pictured from left to right) are: Anne Harrington, Annie Bombard, Sister Therese Capistran, and Joan Union.

Other Committee members include: Rev. Byron Bassett, Elizabeth Callahan, Sheila Callahan, Kathryn Erat, Frances Tingle, Hildegard Gustafson, and representatives from St. Benedict's Church.

## **For More Information...**

For additional information about the Shepherd's Center or to find out the date and location of upcoming events, please contact:

Anne Harrington  
 Director of the C-S Shepherd's Center  
 617/876-4344, ext. 3725  
 617/646-6115

*The Shepherd's Center invites you to participate!*

## The Shepherd's Center of Cambridge-Somerville

*First in New England*

The Shepherd's Center of Cambridge-Somerville is the first of its kind in New England. It is a new organization, planned by congregations, American Baptist Elder Ministries of Massachusetts, and Youville Lifecare in 1996 and officially launched in 1997.

Sponsoring congregations include: Community Baptist Church, Faith Lutheran Church, First Baptist Church (Cambridge), Metropolitan Baptist Church, St. Mary of the Annunciation Church, St. Benedict's Church, St. Paul's Church, and Old Cambridge Baptist Church.

### *Mission*

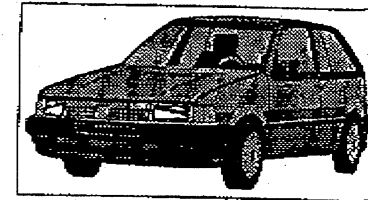
The Shepherd's Center of Cambridge-Somerville is an organization designed to bring older adults together within inter-faith, community-based centers and empower them to develop, provide, and participate in programs and services which improve the quality of life — physically, spiritually, emotionally, intellectually, and socially — for older adults and others in their communities. The Center is open to all, with or without religious affiliation.

### *Activities*

Shepherd's Center programs and services in the Cambridge-Somerville area include: monthly fellowship with speaker, conferences, workshops, and an Escort Transportation service.

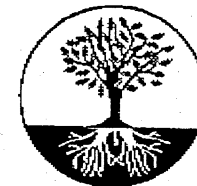
The Shepherd's Center of Cambridge-Somerville  
1575 Cambridge Street  
Cambridge, MA 02138

## Escort Transportation Service



A Service of:

**The Shepherd's Center  
of  
Cambridge-Somerville**



*The Shepherd's Center of CIS — founded and  
co-sponsored by participating congregations,  
American Baptist Elder Ministries  
of MA, and Youville Lifecare*



# City of Cambridge

70.

**IN CITY COUNCIL**

April 27, 1998

## COUNCILLOR BORN

**WHEREAS:** The City Council and various members thereof have recently and frequently raised concerns about the availability of low cost or free transportation to serve the needs of the City's senior citizens; and

**WHEREAS:** A useful service is provided to seniors of Cambridge through the Shepherd's Center of Cambridge-Somerville which offers an Escort Transportation Service tailored to the needs of the senior citizen community of Cambridge, staffed in large part by volunteer drivers, founded by the American Baptist Elder Ministries of Massachusetts and Youville Lifecare and sponsored by several Cambridge Churches; now therefore be it

**ORDERED:** That the City Council go on record thanking the sponsoring organizations for sponsoring this service and request the City Manager to take steps to publicize the availability of this service through appropriate City agencies.

Consent Order #70

CM-219

Councillor Born re: low cost or free  
transportation to serve the needs of  
the City's Senior Citizens.

In City Council April 27, 1998

**ORDER ADOPTED**